

Anti-BIRC5 antibody (60-140) (STJ95838)

STJ95838

GENERAL INFORMATION

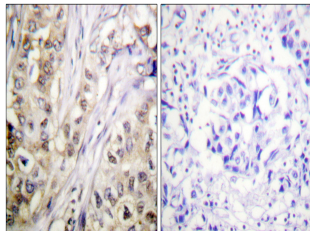
Product Type	Primary antibodies
Short Description	Rabbit polyclonal antibody anti-Baculoviral IAP Repeat-Containing Protein 5 (60-140) is suitable for use in Western Blot, Immunohistochemistry, Immunofluorescence, Immunocytochemistry and ELISA research applications.
Applications	WB, IHC-P, IF, ICC, ELISA
Host/Source	Rabbit
Reactivity	Human, Mouse, Rat

PRODUCT PROPERTIES

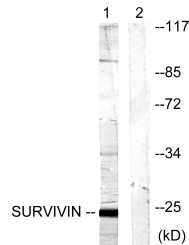
Clonality	Polyclonal
Clone ID	
Concentration	1 mg/mL
Conjugation	Unconjugated
Purification	The antibody was affinity-purified from rabbit anti-serum by affinity-chromatography.
Dilution Range	WB 1:500-1:2000 IHC 1:100-1:300 IF 1:200-1:1000 ELISA 1:5000
Formulation	PBS, 50% Glycerol, 0.5% BSA and 0.02% Sodium Azide.
Isotype	IgG
Storage Instruction	Store at -20°C for up to 1 year from the date of receipt, and avoid repeat freeze-thaw cycles.

TARGET INFORMATION

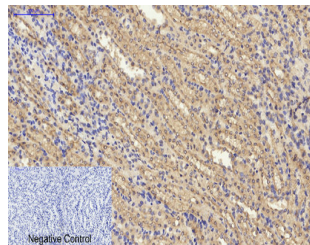
Gene ID	332
Gene Symbol	BIRC5
Uniprot ID	BIRC5_HUMAN
Immunogen	The antiserum was produced against synthesized peptide derived from human Survivin at amino acid range 86-135
Immunogen Region	60-140
Specificity	BIRC5 polyclonal antibody (Baculoviral IAP Repeat-Containing Protein 5) binds to endogenous Baculoviral IAP Repeat-Containing Protein 5 at the amino acid region 60-140.
Immunogen Sequence	



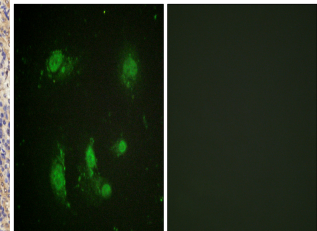
Immunohistochemistry analysis of paraffin-embedded human breast carcinoma tissue, using Survivin Antibody. The picture on the right is blocked with the synthesized peptide.



Western blot analysis of lysates from mouse lung, using Survivin Antibody. The lane on the right is blocked with the synthesized peptide.



Immunohistochemical analysis of paraffin-embedded Mouse kidney tissue. 1. Survivin Polyclonal Antibody was diluted at 1:200 (4°C, overnight). 2. Sodium citrate pH 6.0 was used for antibody retrieval (-98°C, 20min). 3. Secondary antibody was diluted at 1:200 (room temperature, 30min). Negative control was used by secondary antibody only.



Immunofluorescence analysis of HeLa cells, using Survivin Antibody. The picture on the right is blocked with the synthesized peptide.

This product is suitable for in-vitro studies under the RESEARCH USE ONLY [RUO] licence. This product must not be used as for diagnostic or other medical purposes.
St John's Laboratory Ltd, Knowledge Dock Business Centre, University Way, London, E16 2RD | Tel: 0208 223 3081