

Anti-ZNF280A antibody (410-490 C-Term) (STJ95832)

STJ95832

GENERAL INFORMATION

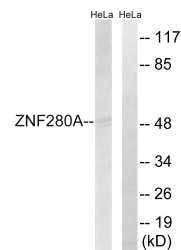
Product Type	Primary antibodies
Short Description	Rabbit polyclonal antibody anti-Zinc Finger Protein 280a (410-490 C-Term) is suitable for use in Western Blot and ELISA research applications.
Applications	WB, ELISA
Host/Source	Rabbit
Reactivity	Human, Rat, Mouse

PRODUCT PROPERTIES

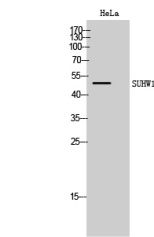
Clonality	Polyclonal
Clone ID	
Concentration	1 mg/mL
Conjugation	Unconjugated
Purification	The antibody was affinity-purified from rabbit anti-serum by affinity-chromatography.
Dilution Range	WB 1:500-1:2000 ELISA 1:40000
Formulation	PBS, 50% Glycerol, 0.5% BSA and 0.02% Sodium Azide.
Isotype	IgG
Storage Instruction	Store at -20°C for up to 1 year from the date of receipt, and avoid repeat freeze-thaw cycles.

TARGET INFORMATION

Gene ID	129025
Gene Symbol	ZNF280A
Uniprot ID	Z280A_HUMAN
Immunogen	The antiserum was produced against synthesized peptide derived from human ZNF280A at amino acid range 441-490
Immunogen Region	410-490 C-Term
Specificity	ZNF280A polyclonal antibody (Zinc Finger Protein 280a) binds to endogenous Zinc Finger Protein 280a at the amino acid region 410-490 C-Term.
Immunogen Sequence	



Western blot analysis of lysates from HeLa cells, using ZNF280A Antibody. The lane on the right is blocked with the synthesized peptide.



Western blot analysis of HeLa cells using SUHW1 Polyclonal Antibody cells nucleus extracted by Minute TM Cytoplasmic and Nuclear Fractionation kit (SC-003, Inventibiotech, MN, USA).

This product is suitable for in-vitro studies under the RESEARCH USE ONLY [RUO] licence. This product must not be used as for diagnostic or other medical purposes.
St John's Laboratory Ltd, Knowledge Dock Business Centre, University Way, London, E16 2RD | Tel: 0208 223 3081