

Anti-RIOK3 antibody (240-320 Internal) (STJ95831)

STJ95831

GENERAL INFORMATION

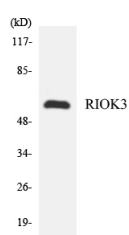
Product Type	Primary antibodies
Short Description	Rabbit polyclonal antibody anti-Serine/Threonine-Protein Kinase Rio3 (240-320 Internal) is suitable for use in Western Blot and ELISA research applications.
Applications	WB, ELISA
Host/Source	Rabbit
Reactivity	Human, Mouse

PRODUCT PROPERTIES

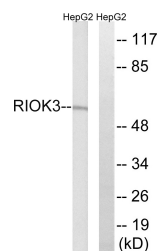
Clonality	Polyclonal
Clone ID	
Concentration	1 mg/mL
Conjugation	Unconjugated
Purification	The antibody was affinity-purified from rabbit anti-serum by affinity-chromatography.
Dilution Range	WB 1:500-1:2000 ELISA 1:40000
Formulation	PBS, 50% Glycerol, 0.5% BSA and 0.02% Sodium Azide.
Isotype	IgG
Storage Instruction	Store at -20°C for up to 1 year from the date of receipt, and avoid repeat freeze-thaw cycles.

TARGET INFORMATION

Gene ID	8780
Gene Symbol	RIOK3
Uniprot ID	RIOK3_HUMAN
Immunogen	The antiserum was produced against synthesized peptide derived from human RIOK3 at amino acid range 271-320
Immunogen Region	240-320 Internal
Specificity	RIOK3 polyclonal antibody (Serine/Threonine-Protein Kinase Rio3) binds to endogenous Serine/Threonine-Protein Kinase Rio3 at the amino acid region 240-320 Internal.
Immunogen Sequence	



Western blot analysis of the lysates from HeLa cells using RIOK3 antibody.



Western blot analysis of lysates from HepG2 cells, using RIOK3 Antibody. The lane on the right is blocked with the synthesized peptide.

This product is suitable for in-vitro studies under the RESEARCH USE ONLY [RUO] licence. This product must not be used as for diagnostic or other medical purposes.
St John's Laboratory Ltd, Knowledge Dock Business Centre, University Way, London, E16 2RD | Tel: 0208 223 3081