

Anti-STON1 antibody (660-740 C-Term) (STJ95828)

STJ95828

GENERAL INFORMATION

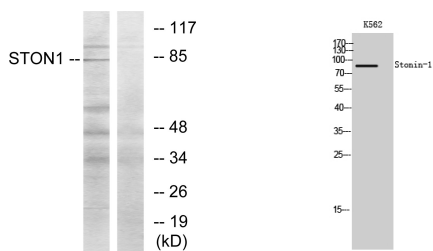
Product Type	Primary antibodies
Short Description	Rabbit polyclonal antibody anti-Stonin-1 (660-740 C-Term) is suitable for use in Western Blot, Immunohistochemistry, Immunofluorescence, Immunocytochemistry and ELISA research applications.
Applications	WB, IHC-P, IF, ICC, ELISA
Host/Source	Rabbit
Reactivity	Human, Rat, Mouse

PRODUCT PROPERTIES

Clonality	Polyclonal
Clone ID	
Concentration	1 mg/mL
Conjugation	Unconjugated
Purification	The antibody was affinity-purified from rabbit anti-serum by affinity-chromatography.
Dilution Range	WB 1:500-1:2000 IHC 1:100-1:300 IF 1:200-1:1000 ELISA 1:10000
Formulation	PBS, 50% Glycerol, 0.5% BSA and 0.02% Sodium Azide.
Isotype	IgG
Storage Instruction	Store at -20°C for up to 1 year from the date of receipt, and avoid repeat freeze-thaw cycles.

TARGET INFORMATION

Gene ID	11037/286749
Gene Symbol	STON1
Uniprot ID	STON1_HUMAN
Immunogen	The antiserum was produced against synthesized peptide derived from human STON1 at amino acid range 686-735
Immunogen Region	660-740 C-Term
Specificity	STON1 polyclonal antibody (Stonin-1) binds to endogenous Stonin-1 at the amino acid region 660-740 C-Term.
Immunogen Sequence	



Western blot analysis of lysates from K562 cells, using STON1 Antibody. The lane on the right is blocked with the synthesized peptide.

Western blot analysis of K562 cells using Stonin-1 Polyclonal Antibody

This product is suitable for in-vitro studies under the RESEARCH USE ONLY [RUO] licence. This product must not be used as for diagnostic or other medical purposes.
St John's Laboratory Ltd, Knowledge Dock Business Centre, University Way, London, E16 2RD | Tel: 0208 223 3081