

## Anti-STK32C antibody (310-390 Internal) (STJ95825)

STJ95825

### GENERAL INFORMATION

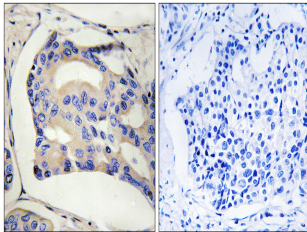
<b>Product Type</b>	Primary antibodies
<b>Short Description</b>	Rabbit polyclonal antibody anti-Serine/Threonine-Protein Kinase 32c (310-390 Internal) is suitable for use in Western Blot, Immunohistochemistry, Immunofluorescence and ELISA research applications.
<b>Applications</b>	WB, IHC-P, IF-P, ELISA
<b>Host/Source</b>	Rabbit
<b>Reactivity</b>	Human, Mouse

### PRODUCT PROPERTIES

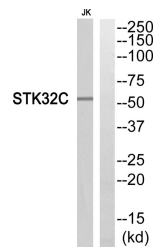
<b>Clonality</b>	Polyclonal
<b>Clone ID</b>	
<b>Concentration</b>	1 mg/mL
<b>Conjugation</b>	Unconjugated
<b>Purification</b>	The antibody was affinity-purified from rabbit anti-serum by affinity-chromatography.
<b>Dilution Range</b>	WB 1:500-1:2000 IHC 1:100-1:300 ELISA 1:5000
<b>Formulation</b>	PBS, 50% Glycerol, 0.5% BSA and 0.02% Sodium Azide.
<b>Isotype</b>	IgG
<b>Storage Instruction</b>	Store at -20°C for up to 1 year from the date of receipt, and avoid repeat freeze-thaw cycles.

### TARGET INFORMATION

<b>Gene ID</b>	282974
<b>Gene Symbol</b>	STK32C
<b>Uniprot ID</b>	ST32C_HUMAN
<b>Immunogen</b>	The antiserum was produced against synthesized peptide derived from human STK32C at amino acid range 340-389
<b>Immunogen Region</b>	310-390 Internal
<b>Specificity</b>	STK32C polyclonal antibody (Serine/Threonine-Protein Kinase 32c) binds to endogenous Serine/Threonine-Protein Kinase 32c at the amino acid region 310-390 Internal.
<b>Immunogen Sequence</b>	



Immunohistochemistry analysis of paraffin-embedded human breast cancer, using STK32C Antibody. The picture on the right is blocked with the STK32C peptide.



Western blot analysis of STK32C Antibody. The lane on the right is blocked with the STK32C peptide.