

Anti-STAT6 antibody (580-660) (STJ95819)

STJ95819

GENERAL INFORMATION

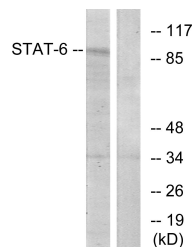
Product Type	Primary antibodies
Short Description	Rabbit polyclonal antibody anti-Signal Transducer And Activator Of Transcription 6 (580-660) is suitable for use in Western Blot, Immunohistochemistry, Immunofluorescence and ELISA research applications.
Applications	WB, IHC-P, IF-P, ELISA
Host/Source	Rabbit
Reactivity	Human, Mouse, Rat, Monkey

PRODUCT PROPERTIES

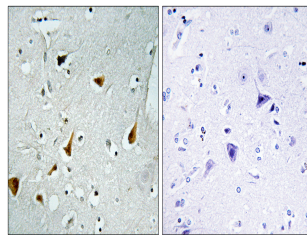
Clonality	Polyclonal
Clone ID	
Concentration	1 mg/mL
Conjugation	Unconjugated
Purification	The antibody was affinity-purified from rabbit anti-serum by affinity-chromatography.
Dilution Range	WB 1:500-1:2000 IHC 1:100-1:300 ELISA 1:5000
Formulation	PBS, 50% Glycerol, 0.5% BSA and 0.02% Sodium Azide.
Isotype	IgG
Storage Instruction	Store at -20°C for up to 1 year from the date of receipt, and avoid repeat freeze-thaw cycles.

TARGET INFORMATION

Gene ID	6778
Gene Symbol	STAT6
Uniprot ID	STAT6_HUMAN
Immunogen Region	The antiserum was produced against synthesized peptide derived from human STAT6 at amino acid range 608-657
Specificity	580-660
Immunogen Sequence	STAT6 polyclonal antibody (Signal Transducer And Activator Of Transcription 6) binds to endogenous Signal Transducer And Activator Of Transcription 6 at the amino acid region 580-660.



Western blot analysis of lysates from HeLa cells, using STAT6 Antibody. The lane on the right is blocked with the synthesized peptide.



Immunohistochemistry analysis of paraffin-embedded human brain tissue, using STAT6 Antibody. The picture on the right is blocked with the synthesized peptide.