

Anti-Stat5 antibody (640-720) (STJ95818)

STJ95818

GENERAL INFORMATION

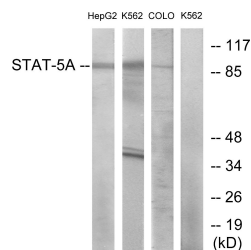
Product Type	Primary antibodies
Short Description	Rabbit polyclonal antibody anti-Signal transducer and activator of transcription 5A and Signal transducer and activator of transcription 5B (640-720) is suitable for use in Western Blot, Immunohistochemistry, Immunofluorescence and ELISA research app
Applications	WB, IHC-P, IF-P, ELISA
Host/Source	Rabbit
Reactivity	Human, Mouse, Rat

PRODUCT PROPERTIES

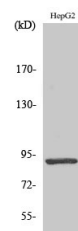
Clonality	Polyclonal
Clone ID	
Concentration	1 mg/mL
Conjugation	Unconjugated
Purification	The antibody was affinity-purified from rabbit anti-serum by affinity-chromatography.
Dilution Range	WB 1:500-1:2000 IHC 1:100-1:300 ELISA 1:10000
Formulation	PBS, 50% Glycerol, 0.5% BSA and 0.02% Sodium Azide.
Isotype	IgG
Storage Instruction	Store at -20°C for up to 1 year from the date of receipt, and avoid repeat freeze-thaw cycles.

TARGET INFORMATION

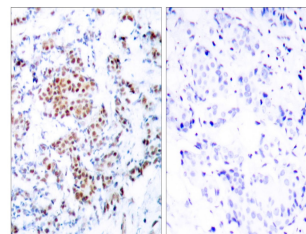
Gene ID	6776 6777
Gene Symbol	STAT5A STAT5B
Uniprot ID	STA5A_HUMAN STA5B_HUMAN
Immunogen Region	The antiserum was produced against synthesized peptide derived from human STAT5A at amino acid range 666-715 640-720
Specificity	Stat5 polyclonal antibody (Signal transducer and activator of transcription 5A and Signal transducer and activator of transcription 5B) binds to endogenous Signal transducer and activator of transcription 5A and Signal transducer and activator of tra
Immunogen Sequence	



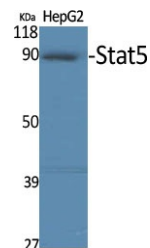
Western blot analysis of lysates from HepG2, K562, and COLO cells, using STAT5A Antibody. The lane on the right is blocked with the synthesized peptide.



Western blot analysis of COLO205 cells using Stat5 Polyclonal Antibody



Immunohistochemistry analysis of paraffin-embedded human breast carcinoma tissue, using STAT5A Antibody. The picture on the right is blocked with the synthesized peptide.



Western blot analysis of various cells using Stat5 Polyclonal Antibody

This product is suitable for in-vitro studies under the RESEARCH USE ONLY [RUO] licence. This product must not be used as for diagnostic or other medical purposes.
St John's Laboratory Ltd, Knowledge Dock Business Centre, University Way, London, E16 2RD | Tel: 0208 223 3081