

Anti-STAT5A antibody (720-800) (STJ95817)

STJ95817

GENERAL INFORMATION

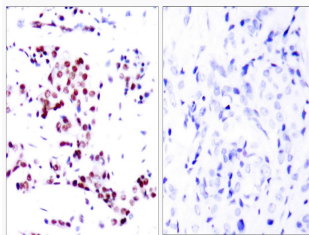
Product Type	Primary antibodies
Short Description	Rabbit polyclonal antibody anti-Signal Transducer And Activator Of Transcription 5a (720-800) is suitable for use in Western Blot, Immunohistochemistry, Immunofluorescence and ELISA research applications.
Applications	WB, IHC-P, IF-P, ELISA
Host/Source	Rabbit
Reactivity	Human, Mouse, Rat

PRODUCT PROPERTIES

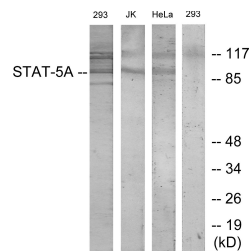
Clonality	Polyclonal
Clone ID	
Concentration	1 mg/mL
Conjugation	Unconjugated
Purification	The antibody was affinity-purified from rabbit anti-serum by affinity-chromatography.
Dilution Range	WB 1:500-1:2000 IHC 1:100-1:300 ELISA 1:20000
Formulation	PBS, 50% Glycerol, 0.5% BSA and 0.02% Sodium Azide.
Isotype	IgG
Storage Instruction	Store at -20°C for up to 1 year from the date of receipt, and avoid repeat freeze-thaw cycles.

TARGET INFORMATION

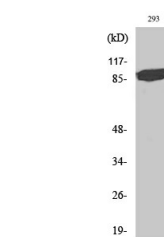
Gene ID	6776
Gene Symbol	STAT5A
Uniprot ID	STA5A_HUMAN
Immunogen	The antiserum was produced against synthesized peptide derived from human STAT5A at amino acid range 745-794
Immunogen Region	720-800
Specificity	STAT5A polyclonal antibody (Signal Transducer And Activator Of Transcription 5a) binds to endogenous Signal Transducer And Activator Of Transcription 5a at the amino acid region 720-800.
Immunogen Sequence	



Immunohistochemistry analysis of paraffin-embedded human breast carcinoma tissue, using STAT5A Antibody. The picture on the right is blocked with the synthesized peptide.



Western blot analysis of lysates from 293, Jurkat, and HeLa cells, treated with PMA 125ng/ml 30', using STAT5A Antibody. The lane on the right is blocked with the synthesized peptide.



Western blot analysis of various cells using Stat5a Polyclonal Antibody