

## Anti-Stat5 antibody (660-740) (STJ95813)

STJ95813

### GENERAL INFORMATION

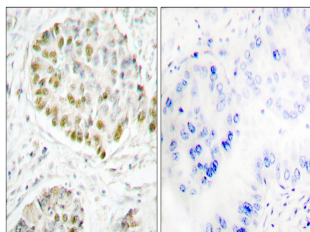
<b>Product Type</b>	Primary antibodies
<b>Short Description</b>	Rabbit polyclonal antibody anti-Signal transducer and activator of transcription 5A and Signal transducer and activator of transcription 5B (660-740) is suitable for use in Western Blot, Immunohistochemistry, Immunofluorescence and ELISA research app
<b>Applications</b>	WB, IHC-P, IF-P, ELISA
<b>Host/Source</b>	Rabbit
<b>Reactivity</b>	Human, Mouse, Rat

### PRODUCT PROPERTIES

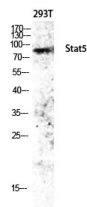
<b>Clonality</b>	Polyclonal
<b>Clone ID</b>	
<b>Concentration</b>	1 mg/mL
<b>Conjugation</b>	Unconjugated
<b>Purification</b>	The antibody was affinity-purified from rabbit anti-serum by affinity-chromatography.
<b>Dilution</b>	IHC 1:100-1:300
<b>Range</b>	ELISA 1:5000
<b>Formulation</b>	PBS, 50% Glycerol, 0.5% BSA and 0.02% Sodium Azide.
<b>Isotype</b>	IgG
<b>Storage</b>	Store at -20°C for up to 1 year from the date of receipt, and avoid repeat freeze-thaw cycles.
<b>Instruction</b>	

### TARGET INFORMATION

<b>Gene ID</b>	<a href="#">6776</a> <a href="#">6777</a>
<b>Gene Symbol</b>	<a href="#">STAT5A</a> <a href="#">STAT5B</a>
<b>Uniprot ID</b>	<a href="#">STA5A_HUMAN</a> <a href="#">STA5B_HUMAN</a>
<b>Immunogen</b>	The antiserum was produced against synthesized peptide derived from human STAT5A at amino acid range 696-745
<b>Immunogen Region</b>	660-740
<b>Specificity</b>	Stat5 polyclonal antibody (Signal transducer and activator of transcription 5A and Signal transducer and activator of transcription 5B) binds to endogenous Signal transducer and activator of transcription 5A and Signal transducer and activator of tra
<b>Immunogen Sequence</b>	



Immunohistochemistry analysis of paraffin-embedded human lung carcinoma tissue, using STAT5A Antibody. The picture on the right is blocked with the synthesized peptide.



Western blot analysis of 293T lysis using Stat5 antibody. Antibody was diluted at 1:500

This product is suitable for in-vitro studies under the RESEARCH USE ONLY [RUO] licence. This product must not be used as for diagnostic or other medical purposes.  
St John's Laboratory Ltd, Knowledge Dock Business Centre, University Way, London, E16 2RD | Tel: 0208 223 3081