

Anti-STAT4 antibody (630-710) (STJ95812)

STJ95812

GENERAL INFORMATION

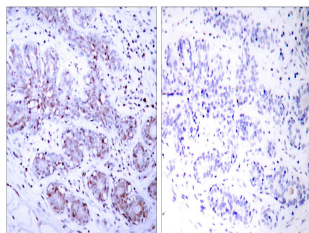
Product Type	Primary antibodies
Short Description	Rabbit polyclonal antibody anti-Signal Transducer And Activator Of Transcription 4 (630-710) is suitable for use in Western Blot, Immunohistochemistry, Immunofluorescence, Immunoprecipitation and ELISA research applications.
Applications	WB, IHC-P, IF-P, IP, ELISA
Host/Source	Rabbit
Reactivity	Human, Mouse, Rat

PRODUCT PROPERTIES

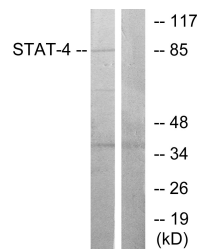
Clonality	Polyclonal
Clone ID	
Concentration	1 mg/mL
Conjugation	Unconjugated
Purification	The antibody was affinity-purified from rabbit anti-serum by affinity-chromatography.
Dilution	WB 1:500-1:2000
Range	IHC 1:100-1:300 IP 2-5 ug/mg ELISA 1:5000
Formulation	PBS, 50% Glycerol, 0.5% BSA and 0.02% Sodium Azide.
Isotype	IgG
Storage Instruction	Store at -20°C for up to 1 year from the date of receipt, and avoid repeat freeze-thaw cycles.

TARGET INFORMATION

Gene ID	6775
Gene Symbol	STAT4
Uniprot ID	STAT4_HUMAN
Immunogen	The antiserum was produced against synthesized peptide derived from human STAT4 at amino acid range 660-709
Immunogen Region	630-710
Specificity	STAT4 polyclonal antibody (Signal Transducer And Activator Of Transcription 4) binds to endogenous Signal Transducer And Activator Of Transcription 4 at the amino acid region 630-710.
Immunogen Sequence	



Immunohistochemistry analysis of paraffin-embedded human breast carcinoma tissue, using STAT4 Antibody. The picture on the right is blocked with the synthesized peptide.



Western blot analysis of lysates from HeLa cells, using STAT4 Antibody. The lane on the right is blocked with the synthesized peptide.



Western blot analysis of various cells using Stat4 Polyclonal Antibody

This product is suitable for in-vitro studies under the RESEARCH USE ONLY [RUO] licence. This product must not be used as for diagnostic or other medical purposes.
St John's Laboratory Ltd, Knowledge Dock Business Centre, University Way, London, E16 2RD | Tel: 0208 223 3081