

Anti-STEAP4 antibody (180-260 Internal) (STJ95801)

STJ95801

GENERAL INFORMATION

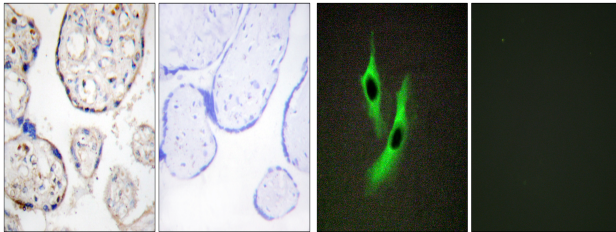
Product Type	Primary antibodies
Short Description	Rabbit polyclonal antibody anti-Metalloreductase Steap4 (180-260 Internal) is suitable for use in Immunohistochemistry, Immunofluorescence, Immunocytochemistry and ELISA research applications.
Applications	IHC-P, IF, ICC, ELISA
Host/Source	Rabbit
Reactivity	Human, Rat, Mouse

PRODUCT PROPERTIES

Clonality	Polyclonal
Clone ID	
Concentration	1 mg/mL
Conjugation	Unconjugated
Purification	The antibody was affinity-purified from rabbit anti-serum by affinity-chromatography.
Dilution Range	IHC 1:100-1:300 IF 1:200-1:1000 ELISA 1:20000
Formulation	PBS, 50% Glycerol, 0.5% BSA and 0.02% Sodium Azide.
Isotype	IgG
Storage Instruction	Store at -20°C for up to 1 year from the date of receipt, and avoid repeat freeze-thaw cycles.

TARGET INFORMATION

Gene ID	79689
Gene Symbol	STEAP4
Uniprot ID	STE44_HUMAN
Immunogen	The antiserum was produced against synthesized peptide derived from human STEAP4 at amino acid range 201-250
Immunogen Region	180-260 Internal
Specificity	STEAP4 polyclonal antibody (Metalloreductase Steap4) binds to endogenous Metalloreductase Steap4 at the amino acid region 180-260 Internal.
Immunogen Sequence	



Immunohistochemistry analysis of paraffin-embedded human placenta tissue, using STEAP4 Antibody. The picture on the right is blocked with the synthesized peptide.

Immunofluorescence analysis of HeLa cells, using STEAP4 Antibody. The picture on the right is blocked with the synthesized peptide.

This product is suitable for in-vitro studies under the RESEARCH USE ONLY [RUO] licence. This product must not be used as for diagnostic or other medical purposes.
St John's Laboratory Ltd, Knowledge Dock Business Centre, University Way, London, E16 2RD | Tel: 0208 223 3081