

Anti-STAM2 antibody (130-210) (STJ95800)

STJ95800

GENERAL INFORMATION

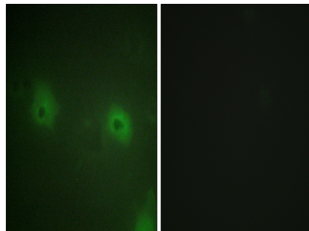
Product Type	Primary antibodies
Short Description	Rabbit polyclonal antibody anti-Signal Transducing Adapter Molecule 2 (130-210) is suitable for use in Western Blot, Immunohistochemistry, Immunofluorescence, Immunocytochemistry and ELISA research applications.
Applications	WB, IHC-P, IF, ICC, ELISA
Host/Source	Rabbit
Reactivity	Human, Mouse

PRODUCT PROPERTIES

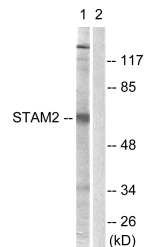
Clonality	Polyclonal
Clone ID	
Concentration	1 mg/mL
Conjugation	Unconjugated
Purification	The antibody was affinity-purified from rabbit anti-serum by affinity-chromatography.
Dilution Range	WB 1:500-1:2000 IHC 1:100-1:300 IF 1:200-1:1000 ELISA 1:40000
Formulation	PBS, 50% Glycerol, 0.5% BSA and 0.02% Sodium Azide.
Isotype	IgG
Storage Instruction	Store at -20°C for up to 1 year from the date of receipt, and avoid repeat freeze-thaw cycles.

TARGET INFORMATION

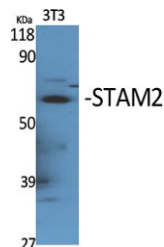
Gene ID	10254
Gene Symbol	STAM2
Uniprot ID	STAM2_HUMAN
Immunogen	The antiserum was produced against synthesized peptide derived from human STAM2 at amino acid range 161-210
Immunogen Region	130-210
Specificity	STAM2 polyclonal antibody (Signal Transducing Adapter Molecule 2) binds to endogenous Signal Transducing Adapter Molecule 2 at the amino acid region 130-210.
Immunogen Sequence	



Immunofluorescence analysis of HUVEC cells, using STAM2 Antibody. The picture on the right is blocked with the synthesized peptide.



Western blot analysis of lysates from NIH/3T3 cells, treated with EGF 200ng/ml 30', using STAM2 Antibody. The lane on the right is blocked with the synthesized peptide.



Western blot analysis of various cells using STAM2 Polyclonal Antibody

This product is suitable for in-vitro studies under the RESEARCH USE ONLY [RUO] licence. This product must not be used as for diagnostic or other medical purposes.
St John's Laboratory Ltd, Knowledge Dock Business Centre, University Way, London, E16 2RD | Tel: 0208 223 3081