

Anti-STAC2 antibody (180-260 Internal) (STJ95798)

STJ95798

GENERAL INFORMATION

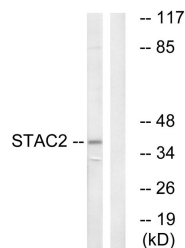
Product Type	Primary antibodies
Short Description	Rabbit polyclonal antibody anti-Sh3 And Cysteine-Rich Domain-Containing Protein 2 (180-260 Internal) is suitable for use in Western Blot and ELISA research applications.
Applications	WB, ELISA
Host/Source	Rabbit
Reactivity	Human, Mouse, Rat

PRODUCT PROPERTIES

Clonality	Polyclonal
Clone ID	
Concentration	1 mg/mL
Conjugation	Unconjugated
Purification	The antibody was affinity-purified from rabbit anti-serum by affinity-chromatography.
Dilution	WB 1:500-1:2000
Range	ELISA 1:20000
Formulation	PBS, 50% Glycerol, 0.5% BSA and 0.02% Sodium Azide.
Isotype	IgG
Storage	Store at -20°C for up to 1 year from the date of receipt, and avoid repeat freeze-thaw cycles.
Instruction	

TARGET INFORMATION

Gene ID	342667
Gene Symbol	STAC2
Uniprot ID	STAC2_HUMAN
Immunogen	The antiserum was produced against synthesized peptide derived from human STAC2 at amino acid range 211-260
Immunogen Region	180-260 Internal
Specificity	STAC2 polyclonal antibody (Sh3 And Cysteine-Rich Domain-Containing Protein 2) binds to endogenous Sh3 And Cysteine-Rich Domain-Containing Protein 2 at the amino acid region 180-260 Internal.
Immunogen Sequence	



Western blot analysis of lysates from K562 cells, using STAC2 Antibody. The lane on the right is blocked with the synthesized peptide.