

Anti-SSH3 antibody (330-410 Internal) (STJ95793)

STJ95793

GENERAL INFORMATION

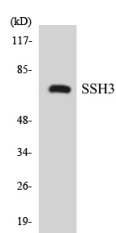
Product Type	Primary antibodies
Short Description	Rabbit polyclonal antibody anti-Protein Phosphatase Slingshot Homolog 3 (330-410 Internal) is suitable for use in Western Blot, Immunohistochemistry, Immunofluorescence and ELISA research applications.
Applications	WB, IHC-P, IF-P, ELISA
Host/Source	Rabbit
Reactivity	Human, Mouse, Rat

PRODUCT PROPERTIES

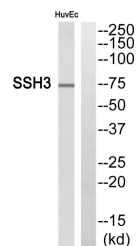
Clonality	Polyclonal
Clone ID	
Concentration	1 mg/mL
Conjugation	Unconjugated
Purification	The antibody was affinity-purified from rabbit anti-serum by affinity-chromatography.
Dilution Range	WB 1:500-1:2000 IHC 1:100-1:300 ELISA 1:40000
Formulation	PBS, 50% Glycerol, 0.5% BSA and 0.02% Sodium Azide.
Isotype	IgG
Storage Instruction	Store at -20°C for up to 1 year from the date of receipt, and avoid repeat freeze-thaw cycles.

TARGET INFORMATION

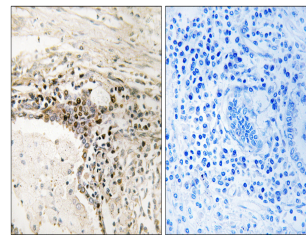
Gene ID	54961
Gene Symbol	SSH3
Uniprot ID	SSH3_HUMAN
Immunogen	The antiserum was produced against synthesized peptide derived from human SSH3 at amino acid range 357-406
Immunogen Region	330-410 Internal
Specificity	SSH3 polyclonal antibody (Protein Phosphatase Slingshot Homolog 3) binds to endogenous Protein Phosphatase Slingshot Homolog 3 at the amino acid region 330-410 Internal.
Immunogen Sequence	



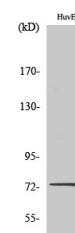
Western blot analysis of the lysates from K562 cells using SSH3 antibody.



Western blot analysis of SSH3 Antibody. The lane on the right is blocked with the SSH3 peptide.



Immunohistochemistry analysis of paraffin-embedded human lung carcinoma, using SSH3 Antibody. The lane on the right is blocked with the SSH3 peptide.



Western blot analysis of various cells using SSH3 Polyclonal Antibody

This product is suitable for in-vitro studies under the RESEARCH USE ONLY [RUO] licence. This product must not be used as for diagnostic or other medical purposes.
St John's Laboratory Ltd, Knowledge Dock Business Centre, University Way, London, E16 2RD | Tel: 0208 223 3081