

Anti-SRY antibody (30-110 Internal) (STJ95789)

STJ95789

GENERAL INFORMATION

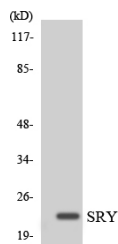
Product Type	Primary antibodies
Short Description	Rabbit polyclonal antibody anti-Sex-Determining Region Y Protein (30-110 Internal) is suitable for use in Western Blot, Immunohistochemistry, Immunofluorescence and ELISA research applications.
Applications	WB, IHC-P, IF-P, ELISA
Host/Source	Rabbit
Reactivity	Human, Rat, Mouse

PRODUCT PROPERTIES

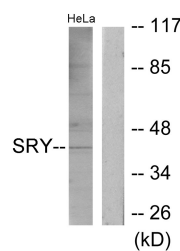
Clonality	Polyclonal
Clone ID	
Concentration	1 mg/mL
Conjugation	Unconjugated
Purification	The antibody was affinity-purified from rabbit anti-serum by affinity-chromatography.
Dilution Range	WB 1:500-1:2000 IHC 1:100-1:300 ELISA 1:20000
Formulation	PBS, 50% Glycerol, 0.5% BSA and 0.02% Sodium Azide.
Isotype	IgG
Storage Instruction	Store at -20°C for up to 1 year from the date of receipt, and avoid repeat freeze-thaw cycles.

TARGET INFORMATION

Gene ID	6736
Gene Symbol	SRY
Uniprot ID	SRY_HUMAN
Immunogen Region	The antiserum was produced against synthesized peptide derived from human SRY at amino acid range 51-100
Immunogen Region	30-110 Internal
Specificity	SRY polyclonal antibody (Sex-Determining Region Y Protein) binds to endogenous Sex-Determining Region Y Protein at the amino acid region 30-110 Internal.
Immunogen Sequence	



Western blot analysis of the lysates from K562 cells using SRY antibody.



Western blot analysis of lysates from HeLa cells, using SRY Antibody. The lane on the right is blocked with the synthesized peptide.