

Anti-SRSF8 antibody (1-80 Internal) (STJ95784)

STJ95784

GENERAL INFORMATION

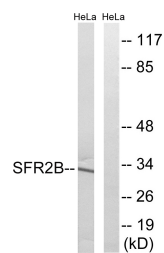
Product Type	Primary antibodies
Short Description	Rabbit polyclonal antibody anti-Serine/Arginine-Rich Splicing Factor 8 (1-80 Internal) is suitable for use in Western Blot, Immunohistochemistry, Immunofluorescence and ELISA research applications.
Applications	WB, IHC-P, IF-P, ELISA
Host/Source	Rabbit
Reactivity	Human, Rat, Mouse

PRODUCT PROPERTIES

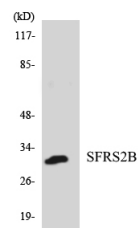
Clonality	Polyclonal
Clone ID	
Concentration	1 mg/mL
Conjugation	Unconjugated
Purification	The antibody was affinity-purified from rabbit anti-serum by affinity-chromatography.
Dilution Range	WB 1:500-1:2000 IHC 1:100-1:300 ELISA 1:40000
Formulation	PBS, 50% Glycerol, 0.5% BSA and 0.02% Sodium Azide.
Isotype	IgG
Storage Instruction	Store at -20°C for up to 1 year from the date of receipt, and avoid repeat freeze-thaw cycles.

TARGET INFORMATION

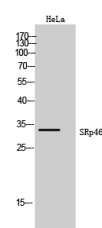
Gene ID	10929
Gene Symbol	SRSF8
Uniprot ID	SRSF8_HUMAN
Immunogen	The antiserum was produced against synthesized peptide derived from human SFRS2B at amino acid range 31-80
Immunogen Region	1-80 Internal
Specificity	SRSF8 polyclonal antibody (Serine/Arginine-Rich Splicing Factor 8) binds to endogenous Serine/Arginine-Rich Splicing Factor 8 at the amino acid region 1-80 Internal.
Immunogen Sequence	



Western blot analysis of lysates from HeLa cells, using SFRS2B Antibody. The lane on the right is blocked with the synthesized peptide.



Western blot analysis of the lysates from HepG2 cells using SFRS2B antibody.



Western blot analysis of HeLa cells using SRP46 Polyclonal Antibody cells nucleus extracted by Minute™ Cytoplasmic and Nuclear Fractionation kit (SC-003, Inventiotech, MN, USA).

This product is suitable for in-vitro studies under the RESEARCH USE ONLY [RUO] licence. This product must not be used as for diagnostic or other medical purposes.
St John's Laboratory Ltd, Knowledge Dock Business Centre, University Way, London, E16 2RD | Tel: 0208 223 3081