

Anti-SRSF5 antibody (40-120 Internal) (STJ95783)

STJ95783

GENERAL INFORMATION

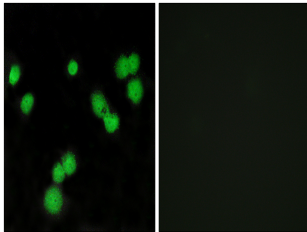
Product Type	Primary antibodies
Short Description	Rabbit polyclonal antibody anti-Serine/Arginine-Rich Splicing Factor 5 (40-120 Internal) is suitable for use in Immunohistochemistry, Immunofluorescence, Immunocytochemistry and ELISA research applications.
Applications	IHC-P, IF, ICC, ELISA
Host/Source	Rabbit
Reactivity	Human, Mouse, Rat

PRODUCT PROPERTIES

Clonality	Polyclonal
Clone ID	
Concentration	1 mg/mL
Conjugation	Unconjugated
Purification	The antibody was affinity-purified from rabbit anti-serum by affinity-chromatography.
Dilution Range	IHC 1:100-1:300 IF 1:200-1:1000 ELISA 1:20000
Formulation	PBS, 50% Glycerol, 0.5% BSA and 0.02% Sodium Azide.
Isotype	IgG
Storage Instruction	Store at -20°C for up to 1 year from the date of receipt, and avoid repeat freeze-thaw cycles.

TARGET INFORMATION

Gene ID	6430
Gene Symbol	SRSF5
Uniprot ID	SRSF5_HUMAN
Immunogen	The antiserum was produced against synthesized peptide derived from human SFRS5 at amino acid range 71-120
Immunogen Region	40-120 Internal
Specificity	SRSF5 polyclonal antibody (Serine/Arginine-Rich Splicing Factor 5) binds to endogenous Serine/Arginine-Rich Splicing Factor 5 at the amino acid region 40-120 Internal.
Immunogen Sequence	



Immunofluorescence analysis of MCF7 cells, using SFRS5 Antibody. The picture on the right is blocked with the synthesized peptide.