

Anti-SCARF2 antibody (650-730 Internal) (STJ95777)

STJ95777

GENERAL INFORMATION

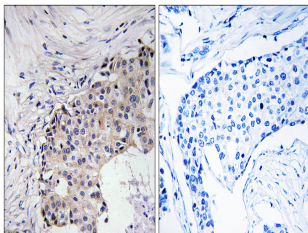
Product Type	Primary antibodies
Short Description	Rabbit polyclonal antibody anti-Scavenger Receptor Class F Member 2 (650-730 Internal) is suitable for use in Immunohistochemistry, Immunofluorescence and ELISA research applications.
Applications	IHC-P, IF-P, ELISA
Host/Source	Rabbit
Reactivity	Human, Rat, Mouse

PRODUCT PROPERTIES

Clonality	Polyclonal
Clone ID	
Concentration	1 mg/mL
Conjugation	Unconjugated
Purification	The antibody was affinity-purified from rabbit anti-serum by affinity-chromatography.
Dilution Range	IHC 1:100-1:300 ELISA 1:40000
Formulation	PBS, 50% Glycerol, 0.5% BSA and 0.02% Sodium Azide.
Isotype	IgG
Storage	Store at -20°C for up to 1 year from the date of receipt, and avoid repeat freeze-thaw cycles.
Instruction	

TARGET INFORMATION

Gene ID	91179
Gene Symbol	SCARF2
Uniprot ID	SREC2_HUMAN
Immunogen	The antiserum was produced against synthesized peptide derived from human SCARF2 at amino acid range 677-726
Immunogen Region	650-730 Internal
Specificity	SCARF2 polyclonal antibody (Scavenger Receptor Class F Member 2) binds to endogenous Scavenger Receptor Class F Member 2 at the amino acid region 650-730 Internal.
Immunogen Sequence	



Immunohistochemistry analysis of paraffin-embedded human breast carcinoma, using SCARF2 Antibody. The picture on the right is blocked with the synthesized peptide.