

Anti-HTR1F antibody (70-150 Internal) (STJ95760)

STJ95760

GENERAL INFORMATION

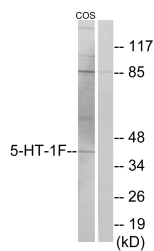
Product Type	Primary antibodies
Short Description	Rabbit polyclonal antibody anti-5-Hydroxytryptamine Receptor 1f (70-150 Internal) is suitable for use in Western Blot, Immunofluorescence, Immunocytochemistry and ELISA research applications.
Applications	WB, IF, ICC, ELISA
Host/Source	Rabbit
Reactivity	Human, Mouse, Rat, Monkey

PRODUCT PROPERTIES

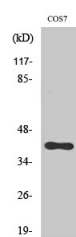
Clonality	Polyclonal
Clone ID	
Concentration	1 mg/mL
Conjugation	Unconjugated
Purification	The antibody was affinity-purified from rabbit anti-serum by affinity-chromatography.
Dilution Range	WB 1:500-1:2000 IF 1:200-1:1000 ELISA 1:40000
Formulation	PBS, 50% Glycerol, 0.5% BSA and 0.02% Sodium Azide.
Isotype	IgG
Storage Instruction	Store at -20°C for up to 1 year from the date of receipt, and avoid repeat freeze-thaw cycles.

TARGET INFORMATION

Gene ID	3355
Gene Symbol	HTR1F
Uniprot ID	5HT1F_HUMAN
Immunogen Region	The antiserum was produced against synthesized peptide derived from human 5-HT-1F at amino acid range 101-150
Region	70-150 Internal
Specificity	HTR1F polyclonal antibody (5-Hydroxytryptamine Receptor 1f) binds to endogenous 5-Hydroxytryptamine Receptor 1f at the amino acid region 70-150 Internal.
Immunogen Sequence	



Western blot analysis of lysates from COS7 cells, using 5-HT-1F Antibody. The lane on the right is blocked with the synthesized peptide.



Western blot analysis of various cells using SR-1F Polyclonal Antibody diluted at 1: 1000

This product is suitable for in-vitro studies under the RESEARCH USE ONLY [RUO] licence. This product must not be used as for diagnostic or other medical purposes.
St John's Laboratory Ltd, Knowledge Dock Business Centre, University Way, London, E16 2RD | Tel: 0208 223 3081