

Anti-HTR1E antibody (70-150 Internal) (STJ95759)

STJ95759

GENERAL INFORMATION

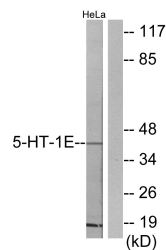
Product Type	Primary antibodies
Short Description	Rabbit polyclonal antibody anti-5-Hydroxytryptamine Receptor 1e (70-150 Internal) is suitable for use in Western Blot and ELISA research applications.
Applications	WB, ELISA
Host/Source	Rabbit
Reactivity	Human, Rat, Mouse

PRODUCT PROPERTIES

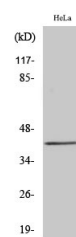
Clonality	Polyclonal
Clone ID	
Concentration	1 mg/mL
Conjugation	Unconjugated
Purification	The antibody was affinity-purified from rabbit anti-serum by affinity-chromatography.
Dilution Range	WB 1:500-1:2000 ELISA 1:5000
Formulation	PBS, 50% Glycerol, 0.5% BSA and 0.02% Sodium Azide.
Isotype	IgG
Storage	Store at -20°C for up to 1 year from the date of receipt, and avoid repeat freeze-thaw cycles.
Instruction	

TARGET INFORMATION

Gene ID	3354
Gene Symbol	HTR1E
Uniprot ID	5HT1E_HUMAN
Immunogen	The antiserum was produced against synthesized peptide derived from human 5-HT-1E at amino acid range 101-150
Immunogen Region	70-150 Internal
Specificity	HTR1E polyclonal antibody (5-Hydroxytryptamine Receptor 1e) binds to endogenous 5-Hydroxytryptamine Receptor 1e at the amino acid region 70-150 Internal.
Immunogen Sequence	



Western blot analysis of lysates from HeLa cells, using 5-HT-1E Antibody. The lane on the right is blocked with the synthesized peptide.



Western blot analysis of various cells using SR-1E Polyclonal Antibody