

Anti-SUPT3H antibody (140-220 Internal) (STJ95754)

STJ95754

GENERAL INFORMATION

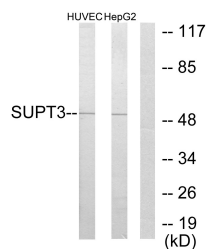
Product Type	Primary antibodies
Short Description	Rabbit polyclonal antibody anti-Transcription Initiation Protein Spt3 Homolog (140-220 Internal) is suitable for use in Western Blot, Immunohistochemistry, Immunofluorescence and ELISA research applications.
Applications	WB, IHC-P, IF-P, ELISA
Host/Source	Rabbit
Reactivity	Human, Rat, Mouse

PRODUCT PROPERTIES

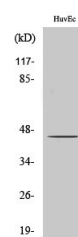
Clonality	Polyclonal
Clone ID	
Concentration	1 mg/mL
Conjugation	Unconjugated
Purification	The antibody was affinity-purified from rabbit anti-serum by affinity-chromatography.
Dilution Range	WB 1:500-1:2000 IHC 1:100-1:300 ELISA 1:20000
Formulation	PBS, 50% Glycerol, 0.5% BSA and 0.02% Sodium Azide.
Isotype	IgG
Storage Instruction	Store at -20°C for up to 1 year from the date of receipt, and avoid repeat freeze-thaw cycles.

TARGET INFORMATION

Gene ID	8464
Gene Symbol	SUPT3H
Uniprot ID	SUPT3_HUMAN
Immunogen Region	The antiserum was produced against synthesized peptide derived from human SUPT3H at amino acid range 171-220
Immunogen Region	140-220 Internal
Specificity	SUPT3H polyclonal antibody (Transcription Initiation Protein Spt3 Homolog) binds to endogenous Transcription Initiation Protein Spt3 Homolog at the amino acid region 140-220 Internal.
Immunogen Sequence	



Western blot analysis of lysates from HUVEC and HepG2 cells, using SUPT3H Antibody. The lane on the right is blocked with the synthesized peptide.



Western blot analysis of various cells using SPT3 Polyclonal Antibody cells nucleus extracted by Minute™ Cytoplasmic and Nuclear Fractionation kit (SC-003, InventiBiotech, MN, USA).

This product is suitable for in-vitro studies under the RESEARCH USE ONLY [RUO] licence. This product must not be used as for diagnostic or other medical purposes.
St John's Laboratory Ltd, Knowledge Dock Business Centre, University Way, London, E16 2RD | Tel: 0208 223 3081