

Anti-SPINK6 antibody (30-110 Internal) (STJ95751)

STJ95751

GENERAL INFORMATION

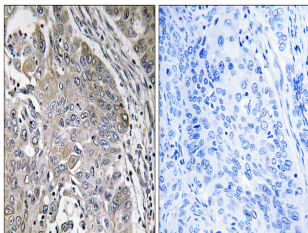
Product Type	Primary antibodies
Short Description	Rabbit polyclonal antibody anti-Serine Protease Inhibitor Kazal-Type 6 (30-110 Internal) is suitable for use in Immunohistochemistry, Immunofluorescence and ELISA research applications.
Applications	IHC-P, IF-P, ELISA
Host/Source	Rabbit
Reactivity	Human, Rat, Mouse

PRODUCT PROPERTIES

Clonality	Polyclonal
Clone ID	
Concentration	1 mg/mL
Conjugation	Unconjugated
Purification	The antibody was affinity-purified from rabbit anti-serum by affinity-chromatography.
Dilution Range	IHC 1:100-1:300 ELISA 1:40000
Formulation	PBS, 50% Glycerol, 0.5% BSA and 0.02% Sodium Azide.
Isotype	IgG
Storage Instruction	Store at -20°C for up to 1 year from the date of receipt, and avoid repeat freeze-thaw cycles.

TARGET INFORMATION

Gene ID	404203
Gene Symbol	SPINK6
Uniprot ID	ISK6_HUMAN
Immunogen	The antiserum was produced against synthesized peptide derived from human SPINK6 at amino acid range 13-62
Immunogen Region	30-110 Internal
Specificity	SPINK6 polyclonal antibody (Serine Protease Inhibitor Kazal-Type 6) binds to endogenous Serine Protease Inhibitor Kazal-Type 6 at the amino acid region 30-110 Internal.
Immunogen Sequence	



Immunohistochemistry analysis of paraffin-embedded human lung carcinoma, using SPINK6 Antibody. The picture on the right is blocked with the synthesized peptide.