

Anti-SPHK2 antibody (550-630) (STJ95748)

STJ95748

GENERAL INFORMATION

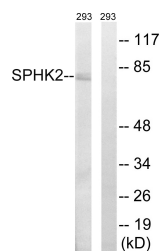
Product Type	Primary antibodies
Short Description	Rabbit polyclonal antibody anti-Sphingosine Kinase 2 (550-630) is suitable for use in Western Blot, Immunohistochemistry, Immunofluorescence and ELISA research applications.
Applications	WB, IHC-P, IF-P, ELISA
Host/Source	Rabbit
Reactivity	Human, Mouse, Rat

PRODUCT PROPERTIES

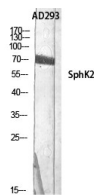
Clonality	Polyclonal
Clone ID	
Concentration	1 mg/mL
Conjugation	Unconjugated
Purification	The antibody was affinity-purified from rabbit anti-serum by affinity-chromatography.
Dilution Range	WB 1:500-1:2000 IHC 1:100-1:300 ELISA 1:5000
Formulation	PBS, 50% Glycerol, 0.5% BSA and 0.02% Sodium Azide.
Isotype	IgG
Storage Instruction	Store at -20°C for up to 1 year from the date of receipt, and avoid repeat freeze-thaw cycles.

TARGET INFORMATION

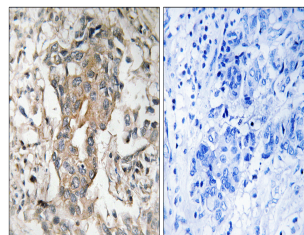
Gene ID	56848
Gene Symbol	SPHK2
Uniprot ID	SPHK2_HUMAN
Immunogen Region	The antiserum was produced against synthesized peptide derived from human SPHK2 at amino acid range 580-629
Immunogen Region	550-630
Specificity	SPHK2 polyclonal antibody (Sphingosine Kinase 2) binds to endogenous Sphingosine Kinase 2 at the amino acid region 550-630.
Immunogen Sequence	



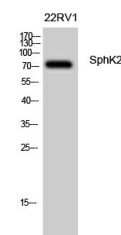
Western blot analysis of lysates from 293 cells, using SPHK2 Antibody. The lane on the right is blocked with the synthesized peptide.



Western blot analysis of AD293 using SphK2 Polyclonal Antibody diluted at 1: 500



Immunohistochemistry analysis of paraffin-embedded human breast carcinoma tissue, using SPHK2 Antibody. The picture on the right is blocked with the synthesized peptide.



Western blot analysis of 22RV1 cells using SphK2 Polyclonal Antibody diluted at 1: 500

This product is suitable for in-vitro studies under the RESEARCH USE ONLY [RUO] licence. This product must not be used as for diagnostic or other medical purposes.
St John's Laboratory Ltd, Knowledge Dock Business Centre, University Way, London, E16 2RD | Tel: 0208 223 3081