

Anti-SPTBN5 antibody (450-530 Internal) (STJ95747)

STJ95747

GENERAL INFORMATION

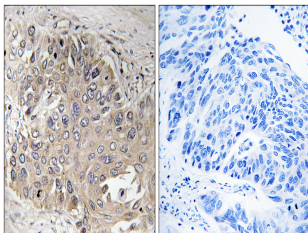
Product Type	Primary antibodies
Short Description	Rabbit polyclonal antibody anti-Spectrin Beta Chain-Non-Erythrocytic 5 (450-530 Internal) is suitable for use in Immunohistochemistry, Immunofluorescence and ELISA research applications.
Applications	IHC-P, IF-P, ELISA
Host/Source	Rabbit
Reactivity	Human, Rat, Mouse

PRODUCT PROPERTIES

Clonality	Polyclonal
Clone ID	
Concentration	1 mg/mL
Conjugation	Unconjugated
Purification	The antibody was affinity-purified from rabbit anti-serum by affinity-chromatography.
Dilution Range	IHC 1:100-1:300 ELISA 1:40000
Formulation	PBS, 50% Glycerol, 0.5% BSA and 0.02% Sodium Azide.
Isotype	IgG
Storage	Store at -20°C for up to 1 year from the date of receipt, and avoid repeat freeze-thaw cycles.
Instruction	

TARGET INFORMATION

Gene ID	51332
Gene Symbol	SPTBN5
Uniprot ID	SPTN5_HUMAN
Immunogen	The antiserum was produced against synthesized peptide derived from human SPTBN5 at amino acid range 481-530
Immunogen Region	450-530 Internal
Specificity	SPTBN5 polyclonal antibody (Spectrin Beta Chain-Non-Erythrocytic 5) binds to endogenous Spectrin Beta Chain-Non-Erythrocytic 5 at the amino acid region 450-530 Internal.
Immunogen Sequence	



Immunohistochemistry analysis of paraffin-embedded human lung carcinoma, using SPTBN5 Antibody. The picture on the right is blocked with the synthesized peptide.