

## Anti-SPTBN1 antibody (620-700 Internal) (STJ95746)

STJ95746

### GENERAL INFORMATION

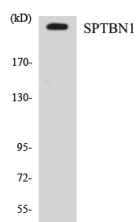
<b>Product Type</b>	Primary antibodies
<b>Short Description</b>	Rabbit polyclonal antibody anti-Spectrin Beta Chain-Non-Erythrocytic 1 (620-700 Internal) is suitable for use in Western Blot, Immunohistochemistry, Immunofluorescence and ELISA research applications.
<b>Applications</b>	WB, IHC-P, IF-P, ELISA
<b>Host/Source</b>	Rabbit
<b>Reactivity</b>	Human, Mouse, Rat

### PRODUCT PROPERTIES

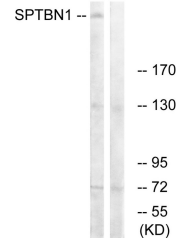
<b>Clonality</b>	Polyclonal
<b>Clone ID</b>	
<b>Concentration</b>	1 mg/mL
<b>Conjugation</b>	Unconjugated
<b>Purification</b>	The antibody was affinity-purified from rabbit anti-serum by affinity-chromatography.
<b>Dilution Range</b>	WB 1:500-1:2000 IHC 1:100-1:300 ELISA 1:10000
<b>Formulation</b>	PBS, 50% Glycerol, 0.5% BSA and 0.02% Sodium Azide.
<b>Isotype</b>	IgG
<b>Storage Instruction</b>	Store at -20°C for up to 1 year from the date of receipt, and avoid repeat freeze-thaw cycles.

### TARGET INFORMATION

<b>Gene ID</b>	6711
<b>Gene Symbol</b>	SPTBN1
<b>Uniprot ID</b>	SPTB2_HUMAN
<b>Immunogen Region</b>	The antiserum was produced against synthesized peptide derived from human SPTBN1 at amino acid range 651-700
<b>Immunogen Region</b>	620-700 Internal
<b>Specificity</b>	SPTBN1 polyclonal antibody (Spectrin Beta Chain-Non-Erythrocytic 1) binds to endogenous Spectrin Beta Chain-Non-Erythrocytic 1 at the amino acid region 620-700 Internal.
<b>Immunogen Sequence</b>	



Western blot analysis of the lysates from Jurkat cells using SPTBN1 antibody.



Western blot analysis of lysates from COLO cells, using SPTBN1 Antibody. The lane on the right is blocked with the synthesized peptide.