

Anti-STK39 antibody (250-330) (STJ95742)

STJ95742

GENERAL INFORMATION

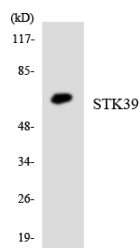
Product Type	Primary antibodies
Short Description	Rabbit polyclonal antibody anti-Ste20/Sps1-Related Proline-Alanine-Rich Protein Kinase (250-330) is suitable for use in Western Blot, Immunohistochemistry, Immunofluorescence and ELISA research applications.
Applications	WB, IHC-P, IF-P, ELISA
Host/Source	Rabbit
Reactivity	Human, Mouse, Rat

PRODUCT PROPERTIES

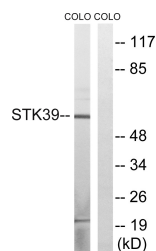
Clonality	Polyclonal
Clone ID	
Concentration	1 mg/mL
Conjugation	Unconjugated
Purification	The antibody was affinity-purified from rabbit anti-serum by affinity-chromatography.
Dilution Range	WB 1:500-1:2000 IHC 1:100-1:300 ELISA 1:40000
Formulation	PBS, 50% Glycerol, 0.5% BSA and 0.02% Sodium Azide.
Isotype	IgG
Storage Instruction	Store at -20°C for up to 1 year from the date of receipt, and avoid repeat freeze-thaw cycles.

TARGET INFORMATION

Gene ID	27347
Gene Symbol	STK39
Uniprot ID	STK39_HUMAN
Immunogen	The antiserum was produced against synthesized peptide derived from human STK39 at amino acid range 277-326
Immunogen Region	250-330
Specificity	STK39 polyclonal antibody (Ste20/Sps1-Related Proline-Alanine-Rich Protein Kinase) binds to endogenous Ste20/Sps1-Related Proline-Alanine-Rich Protein Kinase at the amino acid region 250-330.
Immunogen Sequence	



Western blot analysis of the lysates from HepG2 cells using STK39 antibody.



Western blot analysis of lysates from COLO cells, using STK39 Antibody. The lane on the right is blocked with the synthesized peptide.

This product is suitable for in-vitro studies under the RESEARCH USE ONLY [RUO] licence. This product must not be used as for diagnostic or other medical purposes.
St John's Laboratory Ltd, Knowledge Dock Business Centre, University Way, London, E16 2RD | Tel: 0208 223 3081