

Anti-SP2 antibody (440-520 C-Term) (STJ95740)

STJ95740

GENERAL INFORMATION

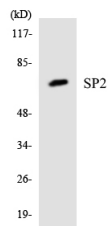
Product Type	Primary antibodies
Short Description	Rabbit polyclonal antibody anti-Transcription Factor Sp2 (440-520 C-Term) is suitable for use in Western Blot, Immunohistochemistry, Immunofluorescence and ELISA research applications.
Applications	WB, IHC-P, IF-P, ELISA
Host/Source	Rabbit
Reactivity	Human, Mouse

PRODUCT PROPERTIES

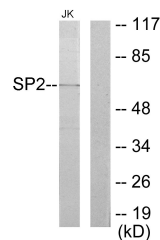
Clonality	Polyclonal
Clone ID	
Concentration	1 mg/mL
Conjugation	Unconjugated
Purification	The antibody was affinity-purified from rabbit anti-serum by affinity-chromatography.
Dilution Range	WB 1:500-1:2000 IHC 1:100-1:300 ELISA 1:20000
Formulation	PBS, 50% Glycerol, 0.5% BSA and 0.02% Sodium Azide.
Isotype	IgG
Storage Instruction	Store at -20°C for up to 1 year from the date of receipt, and avoid repeat freeze-thaw cycles.

TARGET INFORMATION

Gene ID	6668
Gene Symbol	SP2
Uniprot ID	SP2_HUMAN
Immunogen	The antiserum was produced against synthesized peptide derived from human SP2 at amino acid range 471-520
Immunogen Region	440-520 C-Term
Specificity	SP2 polyclonal antibody (Transcription Factor Sp2) binds to endogenous Transcription Factor Sp2 at the amino acid region 440-520 C-Term.
Immunogen Sequence	



Western blot analysis of the lysates from 293 cells using SP2 antibody.



Western blot analysis of lysates from Jurkat cells, using SP2 Antibody. The lane on the right is blocked with the synthesized peptide.

This product is suitable for in-vitro studies under the RESEARCH USE ONLY [RUO] licence. This product must not be used as for diagnostic or other medical purposes.
St John's Laboratory Ltd, Knowledge Dock Business Centre, University Way, London, E16 2RD | Tel: 0208 223 3081