

## Anti-SOX9 antibody (120-200) (STJ95736)

STJ95736

### GENERAL INFORMATION

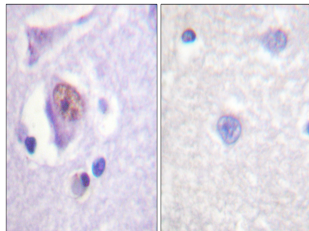
<b>Product Type</b>	Primary antibodies
<b>Short Description</b>	Rabbit polyclonal antibody anti-Transcription Factor Sox-9 (120-200) is suitable for use in Western Blot, Immunohistochemistry, Immunofluorescence, Immunocytochemistry and ELISA research applications.
<b>Applications</b>	WB, IHC-P, IF, ICC, ELISA
<b>Host/Source</b>	Rabbit
<b>Reactivity</b>	Human, Mouse, Rat

### PRODUCT PROPERTIES

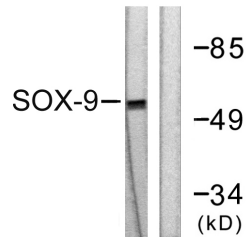
<b>Clonality</b>	Polyclonal
<b>Clone ID</b>	
<b>Concentration</b>	1 mg/mL
<b>Conjugation</b>	Unconjugated
<b>Purification</b>	The antibody was affinity-purified from rabbit anti-serum by affinity-chromatography.
<b>Dilution Range</b>	WB 1:500-1:2000 IHC 1:100-1:300 IF 1:200-1:1000 ELISA 1:5000
<b>Formulation</b>	PBS, 50% Glycerol, 0.5% BSA and 0.02% Sodium Azide.
<b>Isotype</b>	IgG
<b>Storage Instruction</b>	Store at -20°C for up to 1 year from the date of receipt, and avoid repeat freeze-thaw cycles.

### TARGET INFORMATION

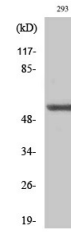
<b>Gene ID</b>	6662
<b>Gene Symbol</b>	SOX9
<b>Uniprot ID</b>	SOX9_HUMAN
<b>Immunogen</b>	The antiserum was produced against synthesized peptide derived from human SOX9 at amino acid range 147-196
<b>Immunogen Region</b>	120-200
<b>Specificity</b>	SOX9 polyclonal antibody (Transcription Factor Sox-9) binds to endogenous Transcription Factor Sox-9 at the amino acid region 120-200.
<b>Immunogen Sequence</b>	



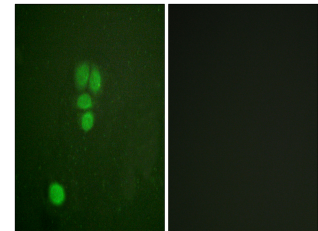
Immunohistochemistry analysis of paraffin-embedded human brain tissue, using SOX9 Antibody. The picture on the right is blocked with the synthesized peptide.



Western blot analysis of lysates from 293 cells, treated with PBS 60', using SOX9 Antibody. The lane on the right is blocked with the synthesized peptide.



Western blot analysis of various cells using Sox-9 Polyclonal Antibody diluted at 1:2000 cells nucleus extracted by Minute TM Cytoplasmic and Nuclear Fractionation kit (SC-003, Inventibiotec, MN, USA).



Immunofluorescence analysis of A549 cells, using SOX9 Antibody. The picture on the right is blocked with the synthesized peptide.

This product is suitable for in-vitro studies under the RESEARCH USE ONLY [RUO] licence. This product must not be used as for diagnostic or other medical purposes.  
St John's Laboratory Ltd, Knowledge Dock Business Centre, University Way, London, E16 2RD | Tel: 0208 223 3081