

Anti-SKIL antibody (590-670 C-Term) (STJ95721)

STJ95721

GENERAL INFORMATION

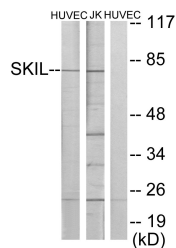
Product Type	Primary antibodies
Short Description	Rabbit polyclonal antibody anti-Ski-Like Protein (590-670 C-Term) is suitable for use in Western Blot, Immunohistochemistry, Immunofluorescence and ELISA research applications.
Applications	WB, IHC-P, IF-P, ELISA
Host/Source	Rabbit
Reactivity	Human, Mouse

PRODUCT PROPERTIES

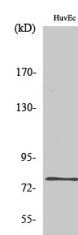
Clonality	Polyclonal
Clone ID	
Concentration	1 mg/mL
Conjugation	Unconjugated
Purification	The antibody was affinity-purified from rabbit anti-serum by affinity-chromatography.
Dilution Range	WB 1:500-1:2000 IHC 1:100-1:300 ELISA 1:40000
Formulation	PBS, 50% Glycerol, 0.5% BSA and 0.02% Sodium Azide.
Isotype	IgG
Storage Instruction	Store at -20°C for up to 1 year from the date of receipt, and avoid repeat freeze-thaw cycles.

TARGET INFORMATION

Gene ID	6498
Gene Symbol	SKIL
Uniprot ID	SKIL_HUMAN
Immunogen	The antiserum was produced against synthesized peptide derived from human SKIL at amino acid range 616-665
Immunogen Region	590-670 C-Term
Specificity	SKIL polyclonal antibody (Ski-Like Protein) binds to endogenous Ski-Like Protein at the amino acid region 590-670 C-Term.
Immunogen Sequence	



Western blot analysis of lysates from HUVEC and Jurkat cells, using SKIL Antibody. The lane on the right is blocked with the synthesized peptide.



Western blot analysis of various cells using SKIL Polyclonal Antibody diluted at 1: 1000 cells nucleus extracted by Minute TM Cytoplasmic and Nuclear Fractionation kit (SC-003, Inventibiotec, MN, USA).

This product is suitable for in-vitro studies under the RESEARCH USE ONLY [RUO] licence. This product must not be used as for diagnostic or other medical purposes.
St John's Laboratory Ltd, Knowledge Dock Business Centre, University Way, London, E16 2RD | Tel: 0208 223 3081