

## Anti-PLK2 antibody (260-340 Internal) (STJ95720)

STJ95720

### GENERAL INFORMATION

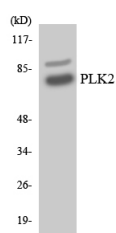
<b>Product Type</b>	Primary antibodies
<b>Short Description</b>	Rabbit polyclonal antibody anti-Serine/Threonine-Protein Kinase Plk2 (260-340 Internal) is suitable for use in Western Blot and ELISA research applications.
<b>Applications</b>	WB, ELISA
<b>Host/Source</b>	Rabbit
<b>Reactivity</b>	Human, Mouse, Rat

### PRODUCT PROPERTIES

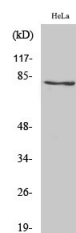
<b>Clonality</b>	Polyclonal
<b>Clone ID</b>	
<b>Concentration</b>	1 mg/mL
<b>Conjugation</b>	Unconjugated
<b>Purification</b>	The antibody was affinity-purified from rabbit anti-serum by affinity-chromatography.
<b>Dilution Range</b>	WB 1:500-1:2000 ELISA 1:40000
<b>Formulation</b>	PBS, 50% Glycerol, 0.5% BSA and 0.02% Sodium Azide.
<b>Isotype</b>	IgG
<b>Storage Instruction</b>	Store at -20°C for up to 1 year from the date of receipt, and avoid repeat freeze-thaw cycles.

### TARGET INFORMATION

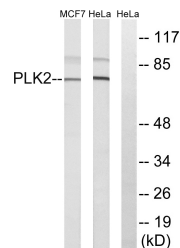
<b>Gene ID</b>	10769
<b>Gene Symbol</b>	PLK2
<b>Uniprot ID</b>	PLK2_HUMAN
<b>Immunogen</b>	The antiserum was produced against synthesized peptide derived from human PLK2 at amino acid range 291-340
<b>Immunogen Region</b>	260-340 Internal
<b>Specificity</b>	PLK2 polyclonal antibody (Serine/Threonine-Protein Kinase Plk2) binds to endogenous Serine/Threonine-Protein Kinase Plk2 at the amino acid region 260-340 Internal.
<b>Immunogen Sequence</b>	



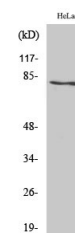
Western blot analysis of the lysates from HeLa cells using PLK2 antibody.



Western blot analysis of MCF7 cells using Snk Polyclonal Antibody



Western blot analysis of lysates from HeLa and MCF-7 cells, using PLK2 Antibody. The lane on the right is blocked with the synthesized peptide.



Western blot analysis of various cells using Snk Polyclonal Antibody