

Anti-SLC38A2 antibody (120-200 Internal) (STJ95719)

STJ95719

GENERAL INFORMATION

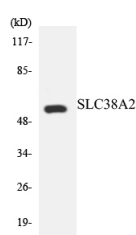
Product Type	Primary antibodies
Short Description	Rabbit polyclonal antibody anti-Sodium-Coupled Neutral Amino Acid Transporter 2 (120-200 Internal) is suitable for use in Western Blot and ELISA research applications.
Applications	WB, ELISA
Host/Source	Rabbit
Reactivity	Human, Rat, Mouse

PRODUCT PROPERTIES

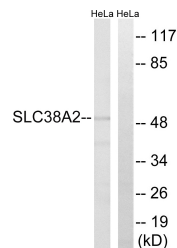
Clonality	Polyclonal
Clone ID	
Concentration	1 mg/mL
Conjugation	Unconjugated
Purification	The antibody was affinity-purified from rabbit anti-serum by affinity-chromatography.
Dilution	WB 1:500-1:2000
Range	ELISA 1:40000
Formulation	PBS, 50% Glycerol, 0.5% BSA and 0.02% Sodium Azide.
Isotype	IgG
Storage	Store at -20°C for up to 1 year from the date of receipt, and avoid repeat freeze-thaw cycles.
Instruction	

TARGET INFORMATION

Gene ID	54407
Gene Symbol	SLC38A2
Uniprot ID	S38A2_HUMAN
Immunogen	The antiserum was produced against synthesized peptide derived from human SLC38A2 at amino acid range 151-200
Immunogen Region	120-200 Internal
Specificity	SLC38A2 polyclonal antibody (Sodium-Coupled Neutral Amino Acid Transporter 2) binds to endogenous Sodium-Coupled Neutral Amino Acid Transporter 2 at the amino acid region 120-200 Internal.
Immunogen Sequence	



Western blot analysis of the lysates from HeLa cells using SLC38A2 antibody.



Western blot analysis of lysates from HeLa cells, using SLC38A2 Antibody. The lane on the right is blocked with the synthesized peptide.

This product is suitable for in-vitro studies under the RESEARCH USE ONLY [RUO] licence. This product must not be used as for diagnostic or other medical purposes.
 St John's Laboratory Ltd, Knowledge Dock Business Centre, University Way, London, E16 2RD | Tel: 0208 223 3081