

## Anti-SNAPC5 antibody (10-90 N-Term) (STJ95718)

STJ95718

### GENERAL INFORMATION

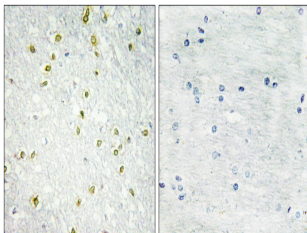
<b>Product Type</b>	Primary antibodies
<b>Short Description</b>	Rabbit polyclonal antibody anti-Snrna-Activating Protein Complex Subunit 5 (10-90 N-Term) is suitable for use in Immunohistochemistry, Immunofluorescence and ELISA research applications.
<b>Applications</b>	IHC-P, IF-P, ELISA
<b>Host/Source</b>	Rabbit
<b>Reactivity</b>	Human, Mouse

### PRODUCT PROPERTIES

<b>Clonality</b>	Polyclonal
<b>Clone ID</b>	
<b>Concentration</b>	1 mg/mL
<b>Conjugation</b>	Unconjugated
<b>Purification</b>	The antibody was affinity-purified from rabbit anti-serum by affinity-chromatography.
<b>Dilution Range</b>	IHC 1:100-1:300 ELISA 1:10000
<b>Formulation</b>	PBS, 50% Glycerol, 0.5% BSA and 0.02% Sodium Azide.
<b>Isotype</b>	IgG
<b>Storage</b>	Store at -20°C for up to 1 year from the date of receipt, and avoid repeat freeze-thaw cycles.
<b>Instruction</b>	

### TARGET INFORMATION

<b>Gene ID</b>	10302
<b>Gene Symbol</b>	SNAPC5
<b>Uniprot ID</b>	SNPC5_HUMAN
<b>Immunogen</b>	The antiserum was produced against synthesized peptide derived from human SNAPC5 at amino acid range 10-59
<b>Immunogen Region</b>	10-90 N-Term
<b>Specificity</b>	SNAPC5 polyclonal antibody (Snrna-Activating Protein Complex Subunit 5) binds to endogenous Snrna-Activating Protein Complex Subunit 5 at the amino acid region 10-90 N-Term.
<b>Immunogen Sequence</b>	



Immunohistochemistry analysis of paraffin-embedded human brain tissue, using SNAPC5 Antibody. The picture on the right is blocked with the synthesized peptide.

This product is suitable for in-vitro studies under the RESEARCH USE ONLY [RUO] licence. This product must not be used as for diagnostic or other medical purposes.  
St John's Laboratory Ltd, Knowledge Dock Business Centre, University Way, London, E16 2RD | Tel: 0208 223 3081