

Anti-SNAP25 antibody (120-200 C-Term) (STJ95717)

STJ95717

GENERAL INFORMATION

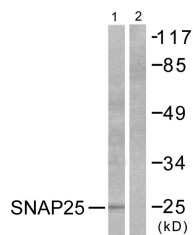
Product Type	Primary antibodies
Short Description	Rabbit polyclonal antibody anti-Synaptosomal-Associated Protein 25 (120-200 C-Term) is suitable for use in Western Blot, Immunohistochemistry, Immunofluorescence and ELISA research applications.
Applications	WB, IHC-P, IF-P, ELISA
Host/Source	Rabbit
Reactivity	Human, Mouse, Rat

PRODUCT PROPERTIES

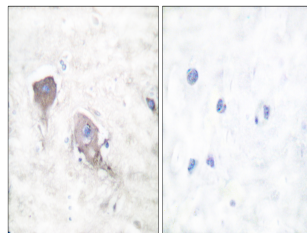
Clonality	Polyclonal
Clone ID	
Concentration	1 mg/mL
Conjugation	Unconjugated
Purification	The antibody was affinity-purified from rabbit anti-serum by affinity-chromatography.
Dilution Range	WB 1:500-1:2000 IHC 1:100-1:300 ELISA 1:20000
Formulation	PBS, 50% Glycerol, 0.5% BSA and 0.02% Sodium Azide.
Isotype	IgG
Storage Instruction	Store at -20°C for up to 1 year from the date of receipt, and avoid repeat freeze-thaw cycles.

TARGET INFORMATION

Gene ID	6616
Gene Symbol	SNAP25
Uniprot ID	SNP25_HUMAN
Immunogen	The antiserum was produced against synthesized peptide derived from human SNAP25 at amino acid range 151-200
Immunogen Region	120-200 C-Term
Specificity	SNAP25 polyclonal antibody (Synaptosomal-Associated Protein 25) binds to endogenous Synaptosomal-Associated Protein 25 at the amino acid region 120-200 C-Term.
Immunogen Sequence	



Western blot analysis of lysates from Raw264.7 cells, treated with EGF 200ng/ml 30', using SNAP25 Antibody. The lane on the right is blocked with the synthesized peptide.



Immunohistochemistry analysis of paraffin-embedded human brain tissue, using SNAP25 Antibody. The picture on the right is blocked with the synthesized peptide.