

Anti-SMYD2 antibody (Internal) (STJ95715)

STJ95715

GENERAL INFORMATION

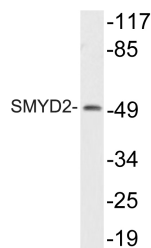
Product Type	Primary antibodies
Short Description	Rabbit polyclonal antibody anti-N-Lysine Methyltransferase Smyd2 (Internal) is suitable for use in Western Blot and ELISA research applications.
Applications	WB, ELISA
Host/Source	Rabbit
Reactivity	Human, Mouse, Rat

PRODUCT PROPERTIES

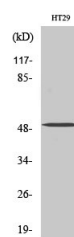
Clonality	Polyclonal
Clone ID	
Concentration	1 mg/mL
Conjugation	Unconjugated
Purification	The antibody was affinity-purified from rabbit anti-serum by affinity-chromatography.
Dilution Range	WB 1:500-1:2000 ELISA 1:10000
Formulation	PBS, 50% Glycerol, 0.5% BSA and 0.02% Sodium Azide.
Isotype	IgG
Storage	Store at -20°C for up to 1 year from the date of receipt, and avoid repeat freeze-thaw cycles.
Instruction	

TARGET INFORMATION

Gene ID	56950
Gene Symbol	SMYD2
Uniprot ID	SMYD2_HUMAN
Immunogen	The antiserum was produced against synthesized peptide derived from human SMYD2 at amino acid range 99-148
Immunogen Region	Internal
Specificity	SMYD2 polyclonal antibody (N-Lysine Methyltransferase Smyd2) binds to endogenous N-Lysine Methyltransferase Smyd2 at the amino acid region Internal.
Immunogen Sequence	



Western blot analysis of lysate from HT29 cells, using SMYD2 antibody.



Western blot analysis of various cells using SMYD2 Polyclonal Antibody diluted at 1: 2000

This product is suitable for in-vitro studies under the RESEARCH USE ONLY [RUO] licence. This product must not be used as for diagnostic or other medical purposes.
St John's Laboratory Ltd, Knowledge Dock Business Centre, University Way, London, E16 2RD | Tel: 0208 223 3081