

Anti-SLC5A6 antibody (520-600 C-Term) (STJ95714)

STJ95714

GENERAL INFORMATION

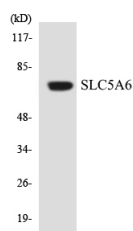
Product Type	Primary antibodies
Short Description	Rabbit polyclonal antibody anti-Sodium-Dependent Multivitamin Transporter (520-600 C-Term) is suitable for use in Western Blot and ELISA research applications.
Applications	WB, ELISA
Host/Source	Rabbit
Reactivity	Human, Rat, Mouse

PRODUCT PROPERTIES

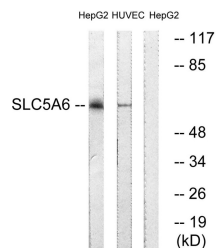
Clonality	Polyclonal
Clone ID	
Concentration	1 mg/mL
Conjugation	Unconjugated
Purification	The antibody was affinity-purified from rabbit anti-serum by affinity-chromatography.
Dilution Range	WB 1:500-1:2000 ELISA 1:10000
Formulation	PBS, 50% Glycerol, 0.5% BSA and 0.02% Sodium Azide.
Isotype	IgG
Storage	Store at -20°C for up to 1 year from the date of receipt, and avoid repeat freeze-thaw cycles.
Instruction	

TARGET INFORMATION

Gene ID	8884
Gene Symbol	SLC5A6
Uniprot ID	SC5A6_HUMAN
Immunogen	The antiserum was produced against synthesized peptide derived from human SLC5A6 at amino acid range 551-600
Immunogen Region	520-600 C-Term
Specificity	SLC5A6 polyclonal antibody (Sodium-Dependent Multivitamin Transporter) binds to endogenous Sodium-Dependent Multivitamin Transporter at the amino acid region 520-600 C-Term.
Immunogen Sequence	



Western blot analysis of the lysates from COLO205 cells using SLC5A6 antibody.



Western blot analysis of lysates from HepG2 and HUVEC cells, using SLC5A6 Antibody. The lane on the right is blocked with the synthesized peptide.

This product is suitable for in-vitro studies under the RESEARCH USE ONLY [RUO] licence. This product must not be used as for diagnostic or other medical purposes.
St John's Laboratory Ltd, Knowledge Dock Business Centre, University Way, London, E16 2RD | Tel: 0208 223 3081