

## Anti-SLC5A3 antibody (190-270 Internal) (STJ95709)

STJ95709

### GENERAL INFORMATION

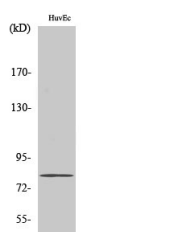
<b>Product Type</b>	Primary antibodies
<b>Short Description</b>	Rabbit polyclonal antibody anti-Sodium/Myo-Inositol Cotransporter (190-270 Internal) is suitable for use in Western Blot and ELISA research applications.
<b>Applications</b>	WB, ELISA
<b>Host/Source</b>	Rabbit
<b>Reactivity</b>	Human, Mouse, Rat

### PRODUCT PROPERTIES

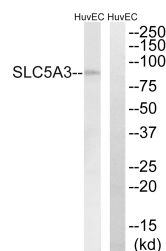
<b>Clonality</b>	Polyclonal
<b>Clone ID</b>	
<b>Concentration</b>	1 mg/mL
<b>Conjugation</b>	Unconjugated
<b>Purification</b>	The antibody was affinity-purified from rabbit anti-serum by affinity-chromatography.
<b>Dilution Range</b>	WB 1:500-1:2000 ELISA 1:10000
<b>Formulation</b>	PBS, 50% Glycerol, 0.5% BSA and 0.02% Sodium Azide.
<b>Isotype</b>	IgG
<b>Storage Instruction</b>	Store at -20°C for up to 1 year from the date of receipt, and avoid repeat freeze-thaw cycles.

### TARGET INFORMATION

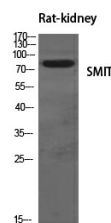
<b>Gene ID</b>	NA
<b>Gene Symbol</b>	SLC5A3
<b>Uniprot ID</b>	SC5A3_HUMAN
<b>Immunogen</b>	The antiserum was produced against synthesized peptide derived from human SLC5A3 at amino acid range 221-270
<b>Immunogen Region</b>	190-270 Internal
<b>Specificity</b>	SLC5A3 polyclonal antibody (Sodium/Myo-Inositol Cotransporter) binds to endogenous Sodium/Myo-Inositol Cotransporter at the amino acid region 190-270 Internal.
<b>Immunogen Sequence</b>	



Western blot analysis of HuvEc cells using SMT Polyclonal Antibody diluted at 1: 500



Western blot analysis of lysates from HUVEC cells, using SLC5A3 Antibody. The lane on the right is blocked with the synthesized peptide.



Western blot analysis of various cells using SMT Polyclonal Antibody diluted at 1: 500

This product is suitable for in-vitro studies under the RESEARCH USE ONLY [RUO] licence. This product must not be used as for diagnostic or other medical purposes.  
St John's Laboratory Ltd, Knowledge Dock Business Centre, University Way, London, E16 2RD | Tel: 0208 223 3081