

## Anti-DCP1A antibody (80-160 Internal) (STJ95708)

STJ95708

### GENERAL INFORMATION

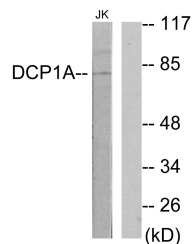
<b>Product Type</b>	Primary antibodies
<b>Short Description</b>	Rabbit polyclonal antibody anti-Mrna-Decapping Enzyme 1a (80-160 Internal) is suitable for use in Western Blot, Immunohistochemistry, Immunofluorescence and ELISA research applications.
<b>Applications</b>	WB, IHC-P, IF-P, ELISA
<b>Host/Source</b>	Rabbit
<b>Reactivity</b>	Human, Mouse

### PRODUCT PROPERTIES

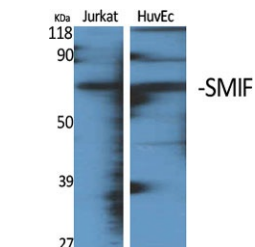
<b>Clonality</b>	Polyclonal
<b>Clone ID</b>	
<b>Concentration</b>	1 mg/mL
<b>Conjugation</b>	Unconjugated
<b>Purification</b>	The antibody was affinity-purified from rabbit anti-serum by affinity-chromatography.
<b>Dilution Range</b>	WB 1:500-1:2000 IHC 1:100-1:300 ELISA 1:20000
<b>Formulation</b>	PBS, 50% Glycerol, 0.5% BSA and 0.02% Sodium Azide.
<b>Isotype</b>	IgG
<b>Storage Instruction</b>	Store at -20°C for up to 1 year from the date of receipt, and avoid repeat freeze-thaw cycles.

### TARGET INFORMATION

<b>Gene ID</b>	55802
<b>Gene Symbol</b>	DCP1A
<b>Uniprot ID</b>	DCP1A_HUMAN
<b>Immunogen</b>	The antiserum was produced against synthesized peptide derived from human DCP1A at amino acid range 111-160
<b>Immunogen Region</b>	80-160 Internal
<b>Specificity</b>	DCP1A polyclonal antibody (Mrna-Decapping Enzyme 1a) binds to endogenous Mrna-Decapping Enzyme 1a at the amino acid region 80-160 Internal.
<b>Immunogen Sequence</b>	



Western blot analysis of lysates from Jurkat cells, using DCP1A Antibody. The lane on the right is blocked with the synthesized peptide.



Western blot analysis of various cells using SMIF Polyclonal Antibody