

Anti-SMG7 antibody (490-570 Internal) (STJ95707)

STJ95707

GENERAL INFORMATION

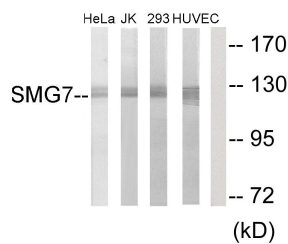
Product Type	Primary antibodies
Short Description	Rabbit polyclonal antibody anti-Protein Smg7 (490-570 Internal) is suitable for use in Western Blot, Immunohistochemistry, Immunofluorescence, Immunocytochemistry and ELISA research applications.
Applications	WB, IHC-P, IF, ICC, ELISA
Host/Source	Rabbit
Reactivity	Human, Rat, Mouse

PRODUCT PROPERTIES

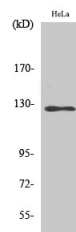
Clonality	Polyclonal
Clone ID	
Concentration	1 mg/mL
Conjugation	Unconjugated
Purification	The antibody was affinity-purified from rabbit anti-serum by affinity-chromatography.
Dilution Range	WB 1:500-1:2000 IHC 1:100-1:300 IF 1:200-1:1000 ELISA 1:20000
Formulation	PBS, 50% Glycerol, 0.5% BSA and 0.02% Sodium Azide.
Isotype	IgG
Storage Instruction	Store at -20°C for up to 1 year from the date of receipt, and avoid repeat freeze-thaw cycles.

TARGET INFORMATION

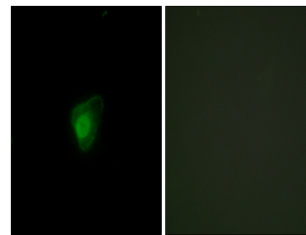
Gene ID	9887
Gene Symbol	SMG7
Uniprot ID	SMG7_HUMAN
Immunogen	The antiserum was produced against synthesized peptide derived from human SMG7 at amino acid range 521-570
Immunogen Region	490-570 Internal
Specificity	SMG7 polyclonal antibody (Protein Smg7) binds to endogenous Protein Smg7 at the amino acid region 490-570 Internal.
Immunogen Sequence	



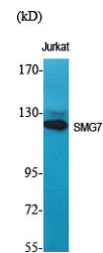
Western blot analysis of lysates from HeLa, Jurkat, 293, and HUVEC cells, using SMG7 Antibody. The lane on the right is blocked with the synthesized peptide.



Western blot analysis of HuvEc cells using SMG7 Polyclonal Antibody diluted at 1: 2000



Immunofluorescence analysis of HepG2 cells, using SMG7 Antibody. The picture on the right is blocked with the synthesized peptide.



Western blot analysis of various cells using SMG7 Polyclonal Antibody diluted at 1: 2000

This product is suitable for in-vitro studies under the RESEARCH USE ONLY [RUO] licence. This product must not be used as for diagnostic or other medical purposes.
St John's Laboratory Ltd, Knowledge Dock Business Centre, University Way, London, E16 2RD | Tel: 0208 223 3081