

Anti-SMAD6 antibody (Internal) (STJ95703)

STJ95703

GENERAL INFORMATION

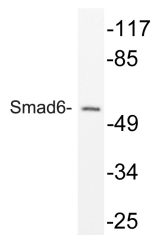
Product Type	Primary antibodies
Short Description	Rabbit polyclonal antibody anti-Mothers Against Decapentaplegic Homolog 6 (Internal) is suitable for use in Western Blot, Immunohistochemistry, Immunofluorescence and ELISA research applications.
Applications	WB, IHC-P, IF-P, ELISA
Host/Source	Rabbit
Reactivity	Human, Mouse

PRODUCT PROPERTIES

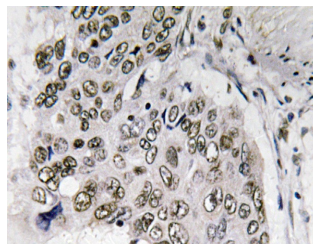
Clonality	Polyclonal
Clone ID	
Concentration	1 mg/mL
Conjugation	Unconjugated
Purification	The antibody was affinity-purified from rabbit anti-serum by affinity-chromatography.
Dilution Range	WB 1:500-1:2000 IHC 1:100-1:300 ELISA 1:40000
Formulation	PBS, 50% Glycerol, 0.5% BSA and 0.02% Sodium Azide.
Isotype	IgG
Storage Instruction	Store at -20°C for up to 1 year from the date of receipt, and avoid repeat freeze-thaw cycles.

TARGET INFORMATION

Gene ID	4091
Gene Symbol	SMAD6
Uniprot ID	SMAD6_HUMAN
Immunogen	The antiserum was produced against synthesized peptide derived from human Smad6 at amino acid range 323-372
Immunogen Region	Internal
Specificity	SMAD6 polyclonal antibody (Mothers Against Decapentaplegic Homolog 6) binds to endogenous Mothers Against Decapentaplegic Homolog 6 at the amino acid region Internal.
Immunogen Sequence	



Western blot analysis of lysate from mouse brain, using Smad6 antibody.



Immunohistochemistry analysis of Smad6 antibody in paraffin-embedded human lung carcinoma tissue.