

Anti-Smad2/3 antibody (1-80) (STJ95697)

STJ95697

GENERAL INFORMATION

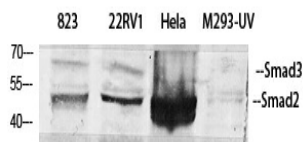
Product Type	Primary antibodies
Short Description	Rabbit polyclonal antibody anti-Mothers against decapentaplegic homolog 2 and Mothers against decapentaplegic homolog 3 (1-80) is suitable for use in Western Blot, Immunohistochemistry, Immunofluorescence and ELISA research applications.
Applications	WB, IHC-P, IF-P, ELISA
Host/Source	Rabbit
Reactivity	Human, Mouse, Rat, Monkey

PRODUCT PROPERTIES

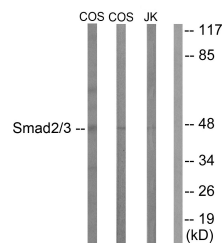
Clonality	Polyclonal
Clone ID	
Concentration	1 mg/mL
Conjugation	Unconjugated
Purification	The antibody was affinity-purified from rabbit anti-serum by affinity-chromatography.
Dilution Range	WB 1:500-1:2000 IHC 1:100-1:300 ELISA 1:10000
Formulation	PBS, 50% Glycerol, 0.5% BSA and 0.02% Sodium Azide.
Isotype	IgG
Storage Instruction	Store at -20°C for up to 1 year from the date of receipt, and avoid repeat freeze-thaw cycles.

TARGET INFORMATION

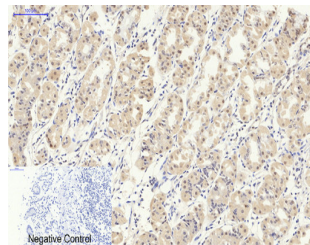
Gene ID	4088 4087
Gene Symbol	SMAD3 SMAD2
Uniprot ID	SMAD3_HUMAN SMAD2_HUMAN
Immunogen Region	The antiserum was produced against synthesized peptide derived from human Smad2/3 at amino acid range 1-50 1-80
Specificity	Smad2/3 polyclonal antibody (Mothers against decapentaplegic homolog 2 and Mothers against decapentaplegic homolog 3) binds to endogenous Mothers against decapentaplegic homolog 2 and Mothers against decapentaplegic homolog 3 at the amino acid region
Immunogen Sequence	



Western blot analysis of various cells using Smad2/3 Polyclonal Antibody diluted at 1: 500



Western blot analysis of lysates from COS7 and Jurkat cells, treated with UV 15', using Smad2/3 Antibody. The lane on the right is blocked with the synthesized peptide.



Immunohistochemical analysis of paraffin-embedded Human-stomach tissue. 1, Smad2/3 Polyclonal Antibody was diluted at 1:200 (4°C, overnight). 2, Sodium citrate pH 6.0 was used for antibody retrieval (~98°C, 20min). 3, Secondary antibody was diluted at 1:200 (room temperature, 30min). Negative control was used by secondary antibody only.

This product is suitable for in-vitro studies under the RESEARCH USE ONLY [RUO] licence. This product must not be used as for diagnostic or other medical purposes.
St John's Laboratory Ltd, Knowledge Dock Business Centre, University Way, London, E16 2RD | Tel: 0208 223 3081