

## Anti-SMAD2 antibody (410-490) (STJ95694)

STJ95694

### GENERAL INFORMATION

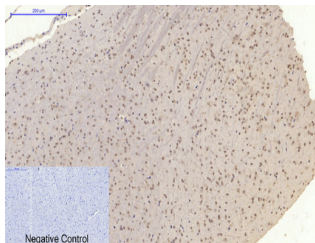
<b>Product Type</b>	Primary antibodies
<b>Short Description</b>	Rabbit polyclonal antibody anti-Mothers Against Decapentaplegic Homolog 2 (410-490) is suitable for use in Western Blot, Immunohistochemistry, Immunofluorescence, Immunocytochemistry and ELISA research applications.
<b>Applications</b>	WB, IHC-P, IF, ICC, ELISA
<b>Host/Source</b>	Rabbit
<b>Reactivity</b>	Human, Mouse, Rat

### PRODUCT PROPERTIES

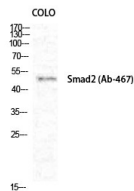
<b>Clonality</b>	Polyclonal
<b>Clone ID</b>	
<b>Concentration</b>	1 mg/mL
<b>Conjugation</b>	Unconjugated
<b>Purification</b>	The antibody was affinity-purified from rabbit anti-serum by affinity-chromatography.
<b>Dilution Range</b>	WB 1:500-1:2000 IHC 1:100-1:300 IF 1:200-1:1000 ELISA 1:5000
<b>Formulation</b>	PBS, 50% Glycerol, 0.5% BSA and 0.02% Sodium Azide.
<b>Isotype</b>	IgG
<b>Storage Instruction</b>	Store at -20°C for up to 1 year from the date of receipt, and avoid repeat freeze-thaw cycles.

### TARGET INFORMATION

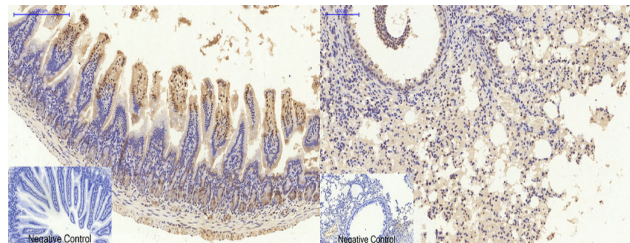
<b>Gene ID</b>	4087
<b>Gene Symbol</b>	SMAD2
<b>Uniprot ID</b>	SMAD2_HUMAN
<b>Immunogen</b>	The antiserum was produced against synthesized peptide derived from human Smad2 at amino acid range 418-467
<b>Immunogen Region</b>	410-490
<b>Specificity</b>	SMAD2 polyclonal antibody (Mothers Against Decapentaplegic Homolog 2) binds to endogenous Mothers Against Decapentaplegic Homolog 2 at the amino acid region 410-490.
<b>Immunogen Sequence</b>	



Negative Control  
Immunohistochemical analysis of paraffin-embedded Mouse-brain tissue. 1. Smad2 Polyclonal Antibody was diluted at 1:200 (4°C, overnight). 2. Sodium citrate pH 6.0 was used for antibody retrieval (>98°C, 20min). 3. Secondary antibody was diluted at 1:200 (room temperature, 30min). Negative control was used by secondary antibody only.



Western blot analysis of COLO cells using Smad2 Polyclonal Antibody diluted at 1: 1000



Negative Control  
Immunohistochemical analysis of paraffin-embedded Mouse-colon tissue. 1. Smad2 Polyclonal Antibody was diluted at 1:200 (4°C, overnight). 2. Sodium citrate pH 6.0 was used for antibody retrieval (>98°C, 20min). 3. Secondary antibody was diluted at 1:200 (room temperature, 30min). Negative control was used by secondary antibody only.

Negative Control  
Immunohistochemical analysis of paraffin-embedded Mouse-lung tissue. 1. Smad2 Polyclonal Antibody was diluted at 1:200 (4°C, overnight). 2. Sodium citrate pH 6.0 was used for antibody retrieval (>98°C, 20min). 3. Secondary antibody was diluted at 1:200 (room temperature, 30min). Negative control was used by secondary antibody only.

This product is suitable for in-vitro studies under the RESEARCH USE ONLY [RUO] licence. This product must not be used as for diagnostic or other medical purposes.  
St John's Laboratory Ltd, Knowledge Dock Business Centre, University Way, London, E16 2RD | Tel: 0208 223 3081