

Anti-SMAD2 antibody (190-270) (STJ95692)

STJ95692

GENERAL INFORMATION

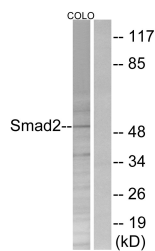
Product Type	Primary antibodies
Short Description	Rabbit polyclonal antibody anti-Mothers Against Decapentaplegic Homolog 2 (190-270) is suitable for use in Western Blot, Immunohistochemistry, Immunofluorescence and ELISA research applications.
Applications	WB, IHC-P, IF-P, ELISA
Host/Source	Rabbit
Reactivity	Human, Mouse, Rat

PRODUCT PROPERTIES

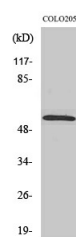
Clonality	Polyclonal
Clone ID	
Concentration	1 mg/mL
Conjugation	Unconjugated
Purification	The antibody was affinity-purified from rabbit anti-serum by affinity-chromatography.
Dilution Range	WB 1:500-1:2000 IHC 1:100-1:300 ELISA 1:20000
Formulation	PBS, 50% Glycerol, 0.5% BSA and 0.02% Sodium Azide.
Isotype	IgG
Storage Instruction	Store at -20°C for up to 1 year from the date of receipt, and avoid repeat freeze-thaw cycles.

TARGET INFORMATION

Gene ID	4087
Gene Symbol	SMAD2
Uniprot ID	SMAD2_HUMAN
Immunogen Region	The antiserum was produced against synthesized peptide derived from human Smad2 at amino acid range 216-265 190-270
Specificity	SMAD2 polyclonal antibody (Mothers Against Decapentaplegic Homolog 2) binds to endogenous Mothers Against Decapentaplegic Homolog 2 at the amino acid region 190-270.
Immunogen Sequence	



Western blot analysis of lysates from COLO205 cells, treated with serum 20% 15', using Smad2 Antibody. The lane on the right is blocked with the synthesized peptide.



Western blot analysis of various cells using Smad2 Polyclonal Antibody

This product is suitable for in-vitro studies under the RESEARCH USE ONLY [RUO] licence. This product must not be used as for diagnostic or other medical purposes.
St John's Laboratory Ltd, Knowledge Dock Business Centre, University Way, London, E16 2RD | Tel: 0208 223 3081