

Anti-Smad1/5/9 antibody (10-90 N-Term) (STJ95690)

STJ95690

GENERAL INFORMATION

Product Type	Primary antibodies
Short Description	Rabbit polyclonal antibody anti-Mothers against decapentaplegic homolog 1 and Mothers against decapentaplegic homolog 5 and Mothers against decapentaplegic homolog 9 (10-90 N-Term) is suitable for use in Western Blot, Immunohistochemistry, Immunofluorescence
Applications	WB, IHC-P, IF, ICC, ELISA
Host/Source	Rabbit
Reactivity	Human, Mouse, Rat

PRODUCT PROPERTIES

Clonality	Polyclonal
Clone ID	
Concentration	1 mg/mL
Conjugation	Unconjugated
Purification	The antibody was affinity-purified from rabbit anti-serum by affinity-chromatography.
Dilution Range	WB 1:500-1:2000 IHC 1:100-1:300 ELISA 1:10000
Formulation	PBS, 50% Glycerol, 0.5% BSA and 0.02% Sodium Azide.
Isotype	IgG
Storage Instruction	Store at -20°C for up to 1 year from the date of receipt, and avoid repeat freeze-thaw cycles.

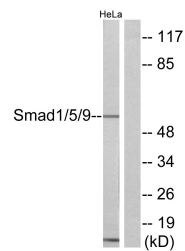
TARGET INFORMATION

Gene ID [4090](#)
[4086](#)
[4093](#)
[SMAD5](#)
[SMAD1](#)
[SMAD5_HUMAN](#)
[SMAD1_HUMAN](#)
[SMAD9_HUMAN](#)

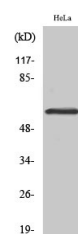
Immunogen The antiserum was produced against synthesized peptide derived from human Smad1/5/9 at amino acid range 10-59
Immunogen Region 10-90 N-Term

Specificity Smad1/5/9 polyclonal antibody (Mothers against decapentaplegic homolog 1 and Mothers against decapentaplegic homolog 5 and Mothers against decapentaplegic homolog 9) binds to endogenous Mothers against decapentaplegic homolog 1 and Mothers against decapentaplegic homolog 5 and Mothers against decapentaplegic homolog 9

Immunogen Sequence



Western blot analysis of lysates from HeLa cells, using Smad1/5/9 Antibody. The lane on the right is blocked with the synthesized peptide.



Western blot analysis of various cells using Smad1/5/9 Polyclonal Antibody diluted at 1: 500

This product is suitable for in-vitro studies under the RESEARCH USE ONLY [RUO] licence. This product must not be used as for diagnostic or other medical purposes.
 St John's Laboratory Ltd, Knowledge Dock Business Centre, University Way, London, E16 2RD | Tel: 0208 223 3081