

## Anti-SLU7 antibody (90-170 Internal) (STJ95687)

STJ95687

### GENERAL INFORMATION

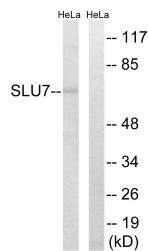
<b>Product Type</b>	Primary antibodies
<b>Short Description</b>	Rabbit polyclonal antibody anti-Pre-Mrna-Splicing Factor Slu7 (90-170 Internal) is suitable for use in Western Blot and ELISA research applications.
<b>Applications</b>	WB, ELISA
<b>Host/Source</b>	Rabbit
<b>Reactivity</b>	Human, Mouse, Rat

### PRODUCT PROPERTIES

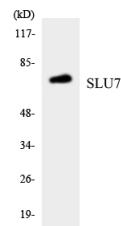
<b>Clonality</b>	Polyclonal
<b>Clone ID</b>	
<b>Concentration</b>	1 mg/mL
<b>Conjugation</b>	Unconjugated
<b>Purification</b>	The antibody was affinity-purified from rabbit anti-serum by affinity-chromatography.
<b>Dilution Range</b>	WB 1:500-1:2000 ELISA 1:40000
<b>Formulation</b>	PBS, 50% Glycerol, 0.5% BSA and 0.02% Sodium Azide.
<b>Isotype</b>	IgG
<b>Storage Instruction</b>	Store at -20°C for up to 1 year from the date of receipt, and avoid repeat freeze-thaw cycles.

### TARGET INFORMATION

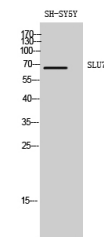
<b>Gene ID</b>	10569
<b>Gene Symbol</b>	SLU7
<b>Uniprot ID</b>	SLU7_HUMAN
<b>Immunogen</b>	The antiserum was produced against synthesized peptide derived from human SLU7 at amino acid range 113-162
<b>Immunogen Region</b>	90-170 Internal
<b>Specificity</b>	SLU7 polyclonal antibody (Pre-Mrna-Splicing Factor Slu7) binds to endogenous Pre-Mrna-Splicing Factor Slu7 at the amino acid region 90-170 Internal.
<b>Immunogen Sequence</b>	



Western blot analysis of lysates from HeLa cells, using SLU7 Antibody. The lane on the right is blocked with the synthesized peptide.



Western blot analysis of the lysates from HepG2 cells using SLU7 antibody.



Western blot analysis of SH-SY5Y cells using SLU7 Polyclonal Antibody diluted at 1: 1000

This product is suitable for in-vitro studies under the RESEARCH USE ONLY [RUO] licence. This product must not be used as for diagnostic or other medical purposes.  
St John's Laboratory Ltd, Knowledge Dock Business Centre, University Way, London, E16 2RD | Tel: 0208 223 3081