

Anti-LCP2 antibody (70-150) (STJ95686)

STJ95686

GENERAL INFORMATION

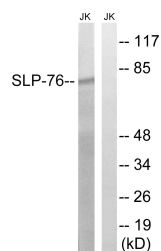
Product Type	Primary antibodies
Short Description	Rabbit polyclonal antibody anti-Lymphocyte Cytosolic Protein 2 (70-150) is suitable for use in Western Blot, Immunohistochemistry, Immunofluorescence and ELISA research applications.
Applications	WB, IHC-P, IF-P, ELISA
Host/Source	Rabbit
Reactivity	Human, Mouse, Rat

PRODUCT PROPERTIES

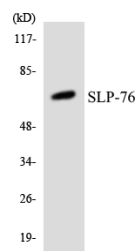
Clonality	Polyclonal
Clone ID	
Concentration	1 mg/mL
Conjugation	Unconjugated
Purification	The antibody was affinity-purified from rabbit anti-serum by affinity-chromatography.
Dilution Range	WB 1:500-1:2000 IHC 1:100-1:300 ELISA 1:10000
Formulation	PBS, 50% Glycerol, 0.5% BSA and 0.02% Sodium Azide.
Isotype	IgG
Storage Instruction	Store at -20°C for up to 1 year from the date of receipt, and avoid repeat freeze-thaw cycles.

TARGET INFORMATION

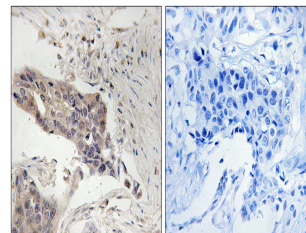
Gene ID	3937
Gene Symbol	LCP2
Uniprot ID	LCP2_HUMAN
Immunogen	The antiserum was produced against synthesized peptide derived from human SLP-76 at amino acid range 94-143
Immunogen Region	70-150
Specificity	LCP2 polyclonal antibody (Lymphocyte Cytosolic Protein 2) binds to endogenous Lymphocyte Cytosolic Protein 2 at the amino acid region 70-150.
Immunogen Sequence	



Western blot analysis of lysates from Jurkat cells, treated with EGF 200ng/ml 5', using SLP-76 Antibody. The lane on the right is blocked with the synthesized peptide.



Western blot analysis of the lysates from HT-29 cells using SLP-76 antibody.



Immunohistochemistry analysis of paraffin-embedded human breast carcinoma tissue, using SLP-76 Antibody. The picture on the right is blocked with the synthesized peptide.