

Anti-SLC6A8 antibody (550-630 C-Term) (STJ95683)

STJ95683

GENERAL INFORMATION

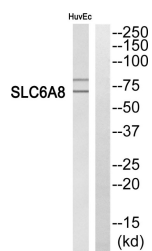
Product Type	Primary antibodies
Short Description	Rabbit polyclonal antibody anti-Sodium-And Chloride-Dependent Creatine Transporter 1 (550-630 C-Term) is suitable for use in Western Blot and ELISA research applications.
Applications	WB, ELISA
Host/Source	Rabbit
Reactivity	Human, Mouse, Rat

PRODUCT PROPERTIES

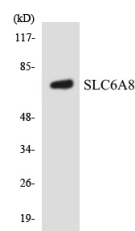
Clonality	Polyclonal
Clone ID	
Concentration	1 mg/mL
Conjugation	Unconjugated
Purification	The antibody was affinity-purified from rabbit anti-serum by affinity-chromatography.
Dilution	WB 1:500-1:2000
Range	ELISA 1:10000
Formulation	PBS, 50% Glycerol, 0.5% BSA and 0.02% Sodium Azide.
Isotype	IgG
Storage	Store at -20°C for up to 1 year from the date of receipt, and avoid repeat freeze-thaw cycles.
Instruction	

TARGET INFORMATION

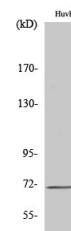
Gene ID	6535
Gene Symbol	SLC6A8
Uniprot ID	SC6A8_HUMAN
Immunogen	The antiserum was produced against synthesized peptide derived from human SLC6A8 at amino acid range 581-630
Immunogen Region	550-630 C-Term
Specificity	SLC6A8 polyclonal antibody (Sodium-And Chloride-Dependent Creatine Transporter 1) binds to endogenous Sodium-And Chloride-Dependent Creatine Transporter 1 at the amino acid region 550-630 C-Term.
Immunogen Sequence	



Western blot analysis of SLC6A8 Antibody. The lane on the right is blocked with the SLC6A8 peptide.



Western blot analysis of the lysates from HUVEC cells using SLC6A8 antibody.



Western blot analysis of various cells using SLC6A8 Polyclonal Antibody.

This product is suitable for in-vitro studies under the RESEARCH USE ONLY [RUO] licence. This product must not be used as for diagnostic or other medical purposes.
 St John's Laboratory Ltd, Knowledge Dock Business Centre, University Way, London, E16 2RD | Tel: 0208 223 3081