

Anti-SLC6A15 antibody (10-90 N-Term) (STJ95682)

STJ95682

GENERAL INFORMATION

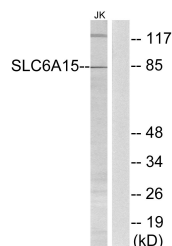
Product Type	Primary antibodies
Short Description	Rabbit polyclonal antibody anti-Sodium-Dependent Neutral Amino Acid Transporter B (Oat2 (10-90 N-Term) is suitable for use in Western Blot and ELISA research applications.
Applications	WB, ELISA
Host/Source	Rabbit
Reactivity	Human, Rat, Mouse

PRODUCT PROPERTIES

Clonality	Polyclonal
Clone ID	
Concentration	1 mg/mL
Conjugation	Unconjugated
Purification	The antibody was affinity-purified from rabbit anti-serum by affinity-chromatography.
Dilution	WB 1:500-1:2000
Range	ELISA 1:40000
Formulation	PBS, 50% Glycerol, 0.5% BSA and 0.02% Sodium Azide.
Isotype	IgG
Storage Instruction	Store at -20°C for up to 1 year from the date of receipt, and avoid repeat freeze-thaw cycles.

TARGET INFORMATION

Gene ID	55117
Gene Symbol	SLC6A15
Uniprot ID	S6A15_HUMAN
Immunogen	The antiserum was produced against synthesized peptide derived from human SLC6A15 at amino acid range 32-81
Immunogen Region	10-90 N-Term
Specificity	SLC6A15 polyclonal antibody (Sodium-Dependent Neutral Amino Acid Transporter B (Oat2) binds to endogenous Sodium-Dependent Neutral Amino Acid Transporter B (Oat2 at the amino acid region 10-90 N-Term.
Immunogen Sequence	



Western blot analysis of lysates from Jurkat cells, using SLC6A15 Antibody. The lane on the right is blocked with the synthesized peptide.