

## Anti-SLC4A8/10 antibody (380-460 Internal) (STJ95681)

STJ95681

### GENERAL INFORMATION

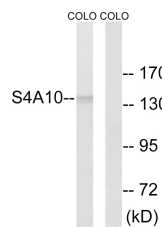
<b>Product Type</b>	Primary antibodies
<b>Short Description</b>	Rabbit polyclonal antibody anti-Electroneutral sodium bicarbonate exchanger 1 and Sodium-driven chloride bicarbonate exchanger (380-460 Internal) is suitable for use in Western Blot, Immunohistochemistry, Immunofluorescence and ELISA research applica
<b>Applications</b>	WB, IHC-P, IF-P, ELISA
<b>Host/Source</b>	Rabbit
<b>Reactivity</b>	Human, Mouse, Rat

### PRODUCT PROPERTIES

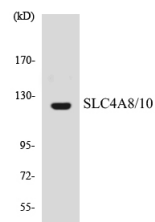
<b>Clonality</b>	Polyclonal
<b>Clone ID</b>	
<b>Concentration</b>	1 mg/mL
<b>Conjugation</b>	Unconjugated
<b>Purification</b>	The antibody was affinity-purified from rabbit anti-serum by affinity-chromatography.
<b>Dilution Range</b>	WB 1:500-1:2000 IHC 1:100-1:300 ELISA 1:40000
<b>Formulation</b>	PBS, 50% Glycerol, 0.5% BSA and 0.02% Sodium Azide.
<b>Isotype</b>	IgG
<b>Storage Instruction</b>	Store at -20°C for up to 1 year from the date of receipt, and avoid repeat freeze-thaw cycles.

### TARGET INFORMATION

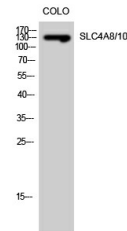
<b>Gene ID</b>	<a href="#">9498</a> <a href="#">57282</a>
<b>Gene Symbol</b>	<a href="#">SLC4A8</a> <a href="#">SLC4A10</a>
<b>Uniprot ID</b>	<a href="#">S4A8_HUMAN</a> <a href="#">S4A10_HUMAN</a>
<b>Immunogen</b>	The antiserum was produced against synthesized peptide derived from human SLC4A8/10 at amino acid range 411-460
<b>Immunogen Region</b>	380-460 Internal
<b>Specificity</b>	SLC4A8/10 polyclonal antibody (Electroneutral sodium bicarbonate exchanger 1 and Sodium-driven chloride bicarbonate exchanger) binds to endogenous Electroneutral sodium bicarbonate exchanger 1 and Sodium-driven chloride bicarbonate exchanger at the a
<b>Immunogen Sequence</b>	



Western blot analysis of lysates from COLO cells, using SLC4A8/10 Antibody. The lane on the right is blocked with the synthesized peptide.



Western blot analysis of the lysates from HUVEC cells using SLC4A8/10 antibody.



Western blot analysis of COLO cells using SLC4A8/10 Polyclonal Antibody diluted at 1: 500

This product is suitable for in-vitro studies under the RESEARCH USE ONLY [RUO] licence. This product must not be used as for diagnostic or other medical purposes.

St John's Laboratory Ltd, Knowledge Dock Business Centre, University Way, London, E16 2RD | Tel: 0208 223 3081