

## Anti-SLC43A1 antibody (200-280 Internal) (STJ95680)

STJ95680

### GENERAL INFORMATION

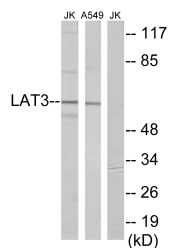
<b>Product Type</b>	Primary antibodies
<b>Short Description</b>	Rabbit polyclonal antibody anti-Large Neutral Amino Acids Transporter Small Subunit 3 (200-280 Internal) is suitable for use in Western Blot and ELISA research applications.
<b>Applications</b>	WB, ELISA
<b>Host/Source</b>	Rabbit
<b>Reactivity</b>	Human, Rat, Mouse

### PRODUCT PROPERTIES

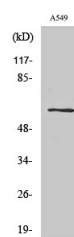
<b>Clonality</b>	Polyclonal
<b>Clone ID</b>	
<b>Concentration</b>	1 mg/mL
<b>Conjugation</b>	Unconjugated
<b>Purification</b>	The antibody was affinity-purified from rabbit anti-serum by affinity-chromatography.
<b>Dilution</b>	WB 1:500-1:2000
<b>Range</b>	ELISA 1:20000
<b>Formulation</b>	PBS, 50% Glycerol, 0.5% BSA and 0.02% Sodium Azide.
<b>Isotype</b>	IgG
<b>Storage Instruction</b>	Store at -20°C for up to 1 year from the date of receipt, and avoid repeat freeze-thaw cycles.

### TARGET INFORMATION

<b>Gene ID</b>	8501
<b>Gene Symbol</b>	SLC43A1
<b>Uniprot ID</b>	LAT3_HUMAN
<b>Immunogen</b>	The antiserum was produced against synthesized peptide derived from human LAT3 at amino acid range 231-280
<b>Immunogen Region</b>	200-280 Internal
<b>Specificity</b>	SLC43A1 polyclonal antibody (Large Neutral Amino Acids Transporter Small Subunit 3) binds to endogenous Large Neutral Amino Acids Transporter Small Subunit 3 at the amino acid region 200-280 Internal.
<b>Immunogen Sequence</b>	



Western blot analysis of lysates from A549 and Jurkat cells, using LAT3 Antibody. The lane on the right is blocked with the synthesized peptide.



Western blot analysis of various cells using SLC43A1 Polyclonal Antibody