

## Anti-SLC17A2 antibody (190-270 Internal) (STJ95679)

STJ95679

### GENERAL INFORMATION

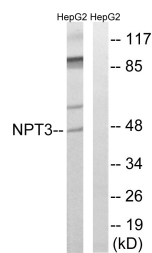
<b>Product Type</b>	Primary antibodies
<b>Short Description</b>	Rabbit polyclonal antibody anti-Sodium-Dependent Phosphate Transport Protein 3 (190-270 Internal) is suitable for use in Western Blot and ELISA research applications.
<b>Applications</b>	WB, ELISA
<b>Host/Source</b>	Rabbit
<b>Reactivity</b>	Human, Mouse

### PRODUCT PROPERTIES

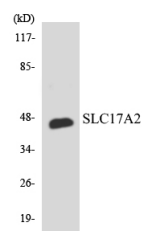
<b>Clonality</b>	Polyclonal
<b>Clone ID</b>	
<b>Concentration</b>	1 mg/mL
<b>Conjugation</b>	Unconjugated
<b>Purification</b>	The antibody was affinity-purified from rabbit anti-serum by affinity-chromatography.
<b>Dilution</b>	WB 1:500-1:2000
<b>Range</b>	ELISA 1:40000
<b>Formulation</b>	PBS, 50% Glycerol, 0.5% BSA and 0.02% Sodium Azide.
<b>Isotype</b>	IgG
<b>Storage</b>	Store at -20°C for up to 1 year from the date of receipt, and avoid repeat freeze-thaw cycles.
<b>Instruction</b>	

### TARGET INFORMATION

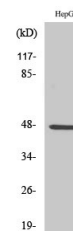
<b>Gene ID</b>	10246
<b>Gene Symbol</b>	SLC17A2
<b>Uniprot ID</b>	NPT3_HUMAN
<b>Immunogen</b>	The antiserum was produced against synthesized peptide derived from human SLC17A2 at amino acid range 213-262
<b>Immunogen Region</b>	190-270 Internal
<b>Specificity</b>	SLC17A2 polyclonal antibody (Sodium-Dependent Phosphate Transport Protein 3) binds to endogenous Sodium-Dependent Phosphate Transport Protein 3 at the amino acid region 190-270 Internal.
<b>Immunogen Sequence</b>	



Western blot analysis of lysates from HepG2 cells, using SLC17A2 Antibody. The lane on the right is blocked with the synthesized peptide.



Western blot analysis of the lysates from RAW264.7 cells using SLC17A2 antibody.



Western blot analysis of various cells using SLC17A2 Polyclonal Antibody